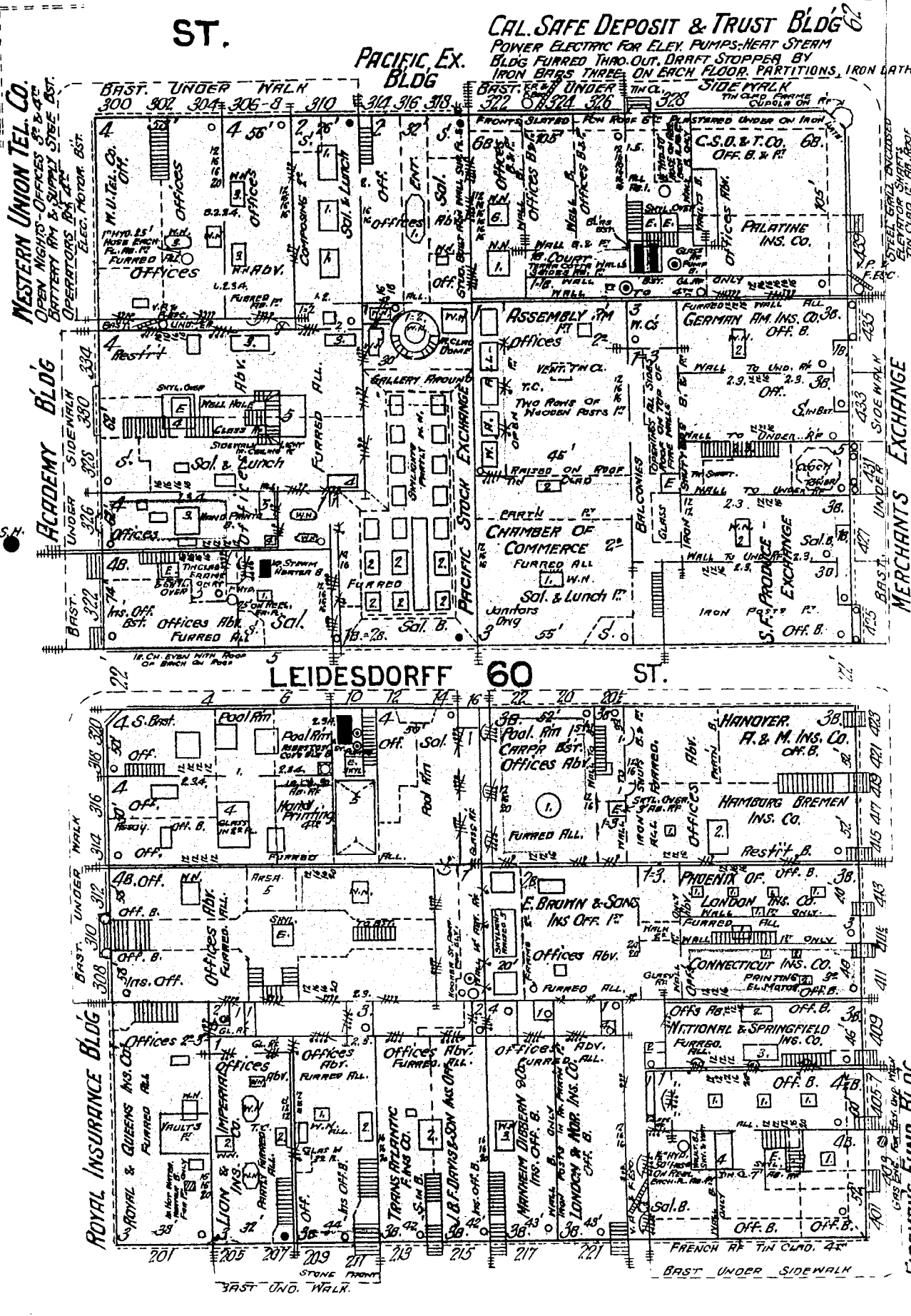
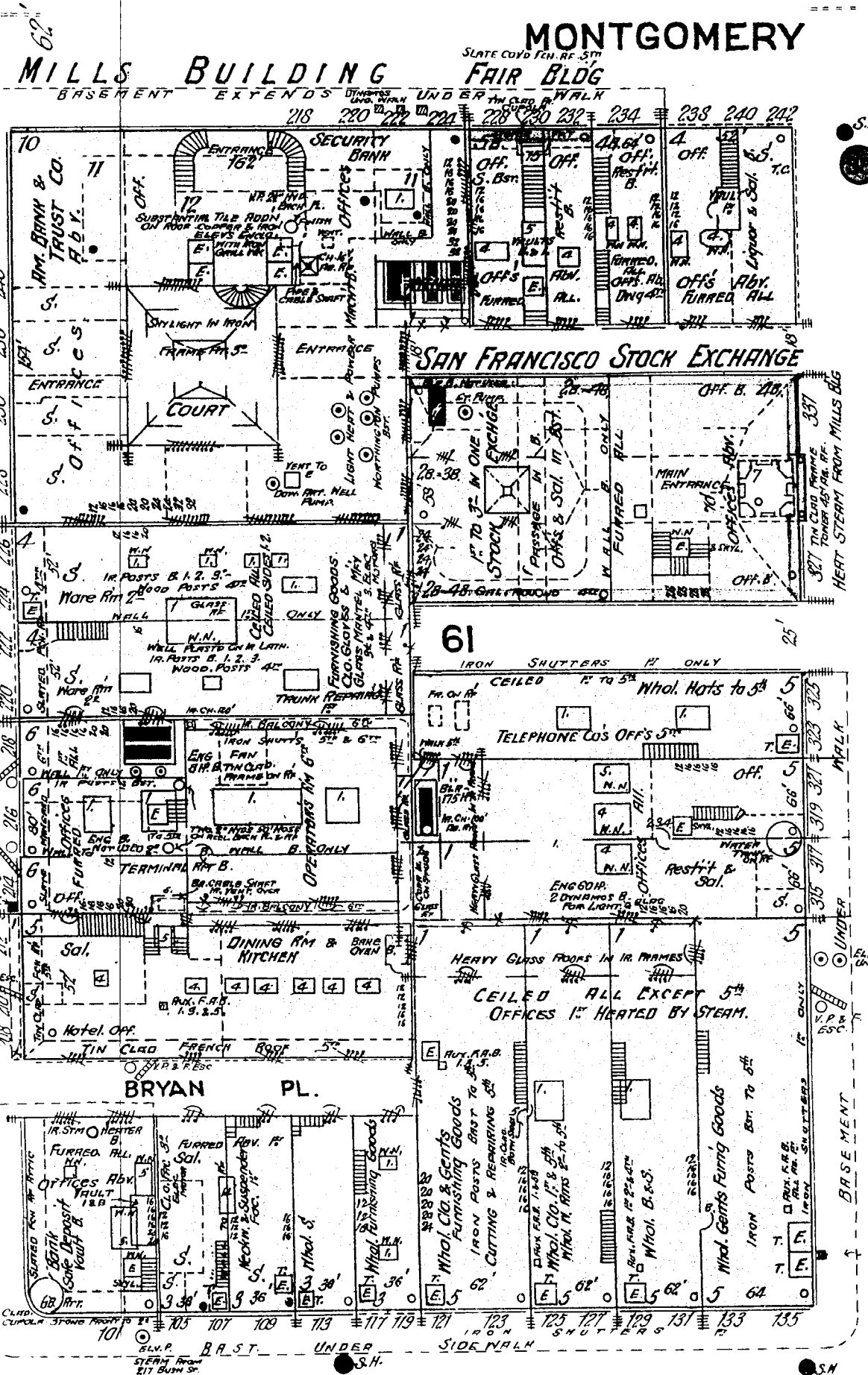


**MILLS BLDG.**  
 ONE NIGHT WATCHMAN - LIGHTS ELECTRIC - HEAT STEAM FROM PLANT IN BAST.  
 BOILER & ENGINE RM B5T. ONE MAN IN ATTENDANCE AT ALL TIMES  
 THREE STERLING BOILERS 120" EACH - TWO 2000 ENGINES  
 ONE DOW & FIVE WORTHINGTON STEAM PUMPS  
 THREE 60 H.P. DYNAMOS UNDER SIDEWALK  
 150' 3/4" HOSE REST ON ROOF - ONE 4" PIPE & TWO 2 1/2" HOSE EACH FL.

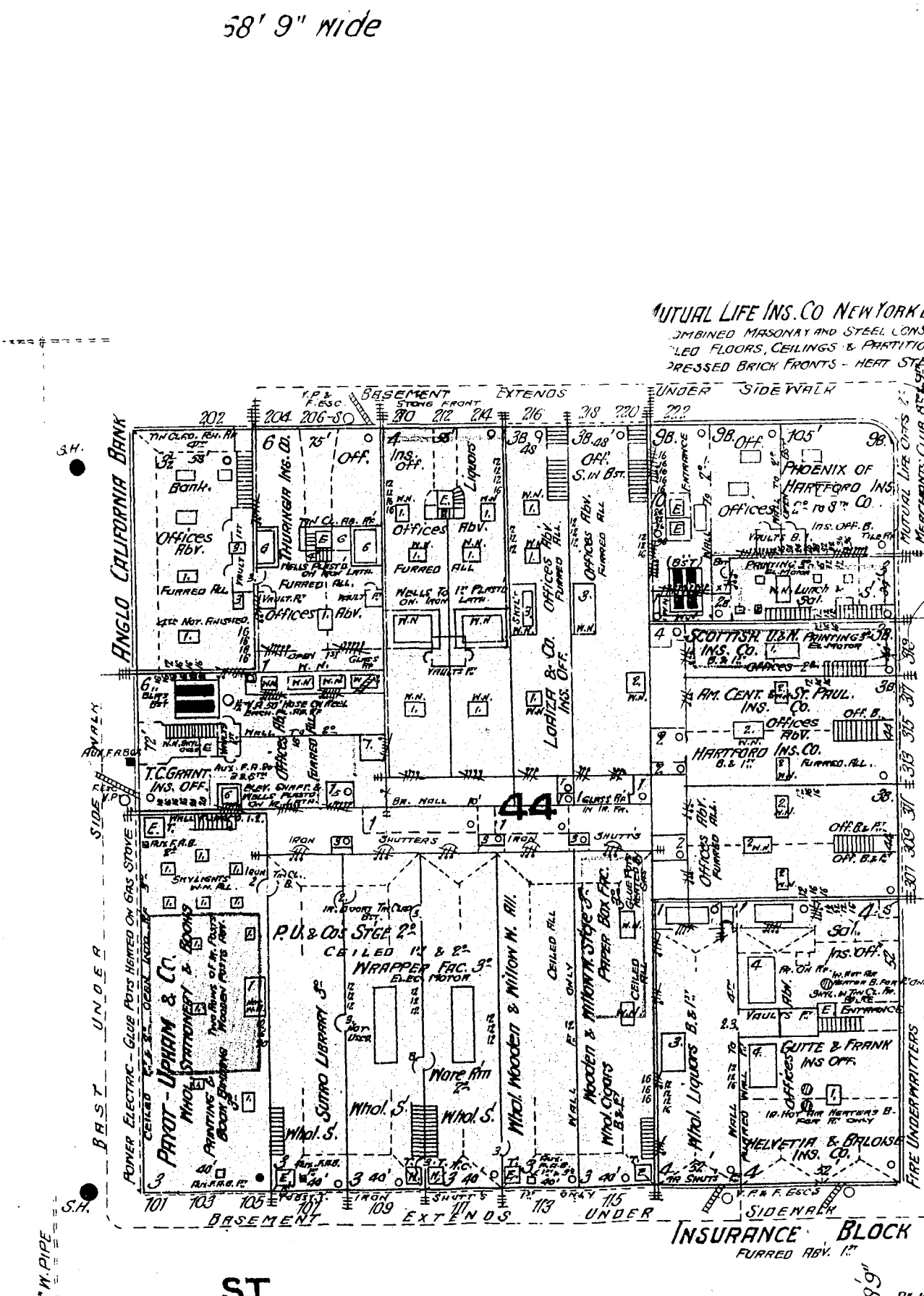
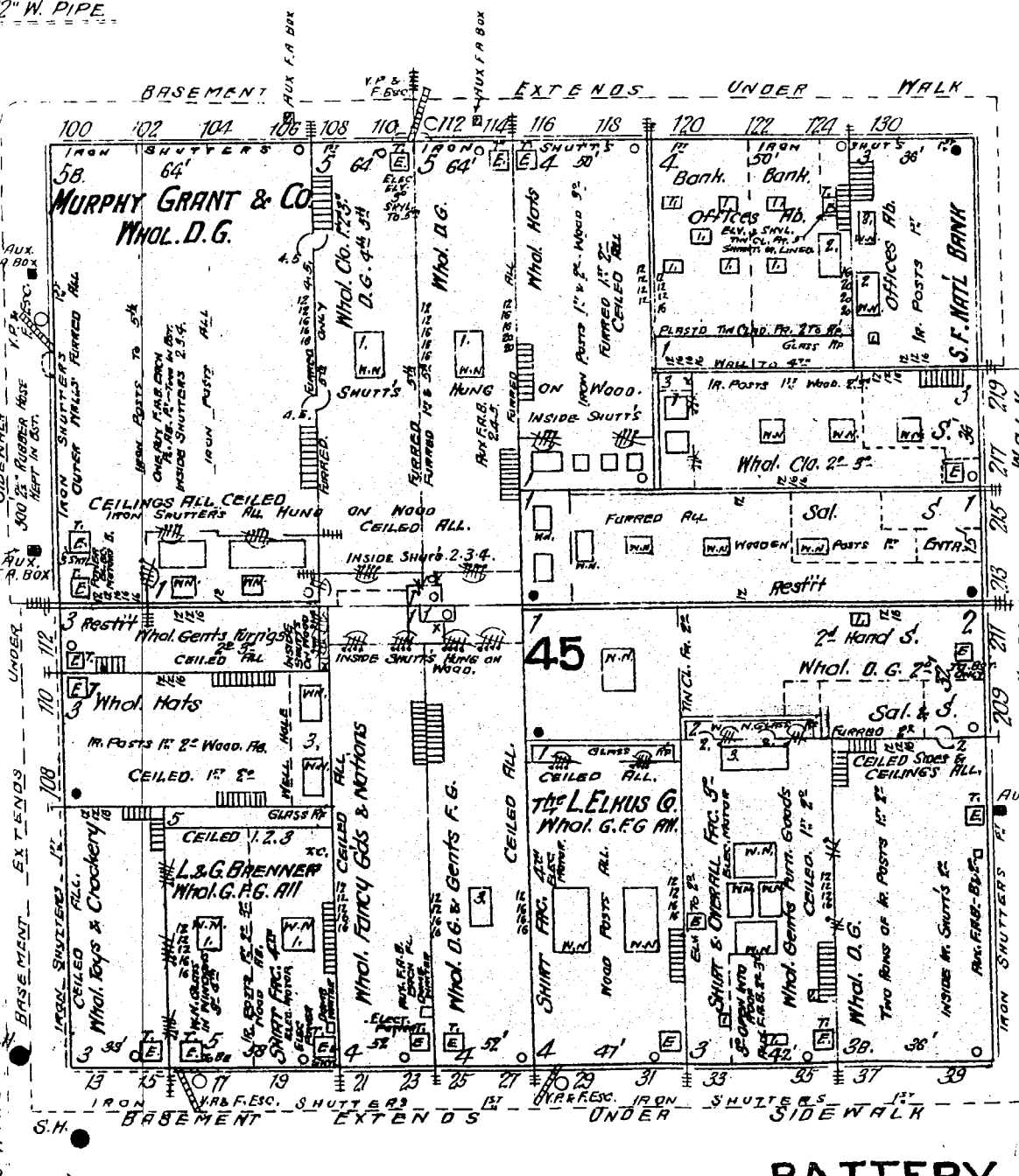
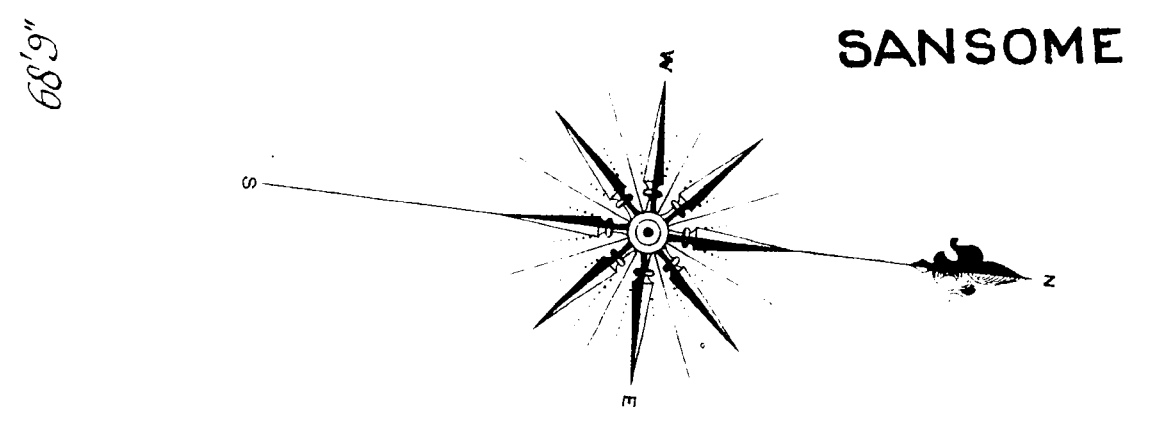
**CONSTRUCTION**  
 FIRE PROOF THIRD FLOOR - INDEPENDENT IRON & STEEL FRAME CONSTR.  
 TILE & CEMENT CEILING FLOORS & PARTITIONS  
 1ST FLOOR SUB-DIVIDED FOR STORES & OFFICES BY BRICK & TILE PARTINS  
 EXTERIOR & COURT WALLS PRESSED BRICK & TERRA COTTA  
 INTERIOR FINISH PRESSED BRICK & MARBLE

26



115

7



PINE

CALIFORNIA

8

**TELEPHONE BLDG - 214-6 BUSH ST.**  
 NIGHT WATCHMAN - OPERATOR'S ROOM OPEN ALL NIGHT  
 BOILERS & SMALL BATTERY RM B5T - ELEV. OPERATED BY ELEC. POWER  
 BOILERS FOR HEAT, BATH & SMALL ENGINE OPERATED BY AIR FAN ON ROOF  
 TERMINAL ROOM IN BAST. FIRE PROOF DR. TRULVED CEILING  
 CABLE SHARP PLUGS ON IRON LATH - ONE CROWBAR 6" ONLY  
 SULLIVAN'S HEAVY RM GLASS IN IRON FRAME - TWO HOSE REELS EACH FLR  
 STEEL GIRDERS OVER ROOF REST ON FIRE WALLS - CARRY 6" FLOOR  
 NUMBER OF FIRE PAILS & EXTING. AND ONE F.R. BOX EACH FLOOR

