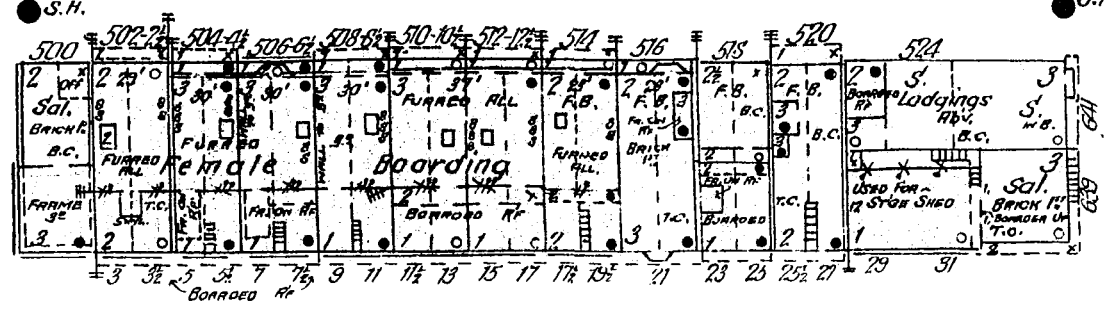
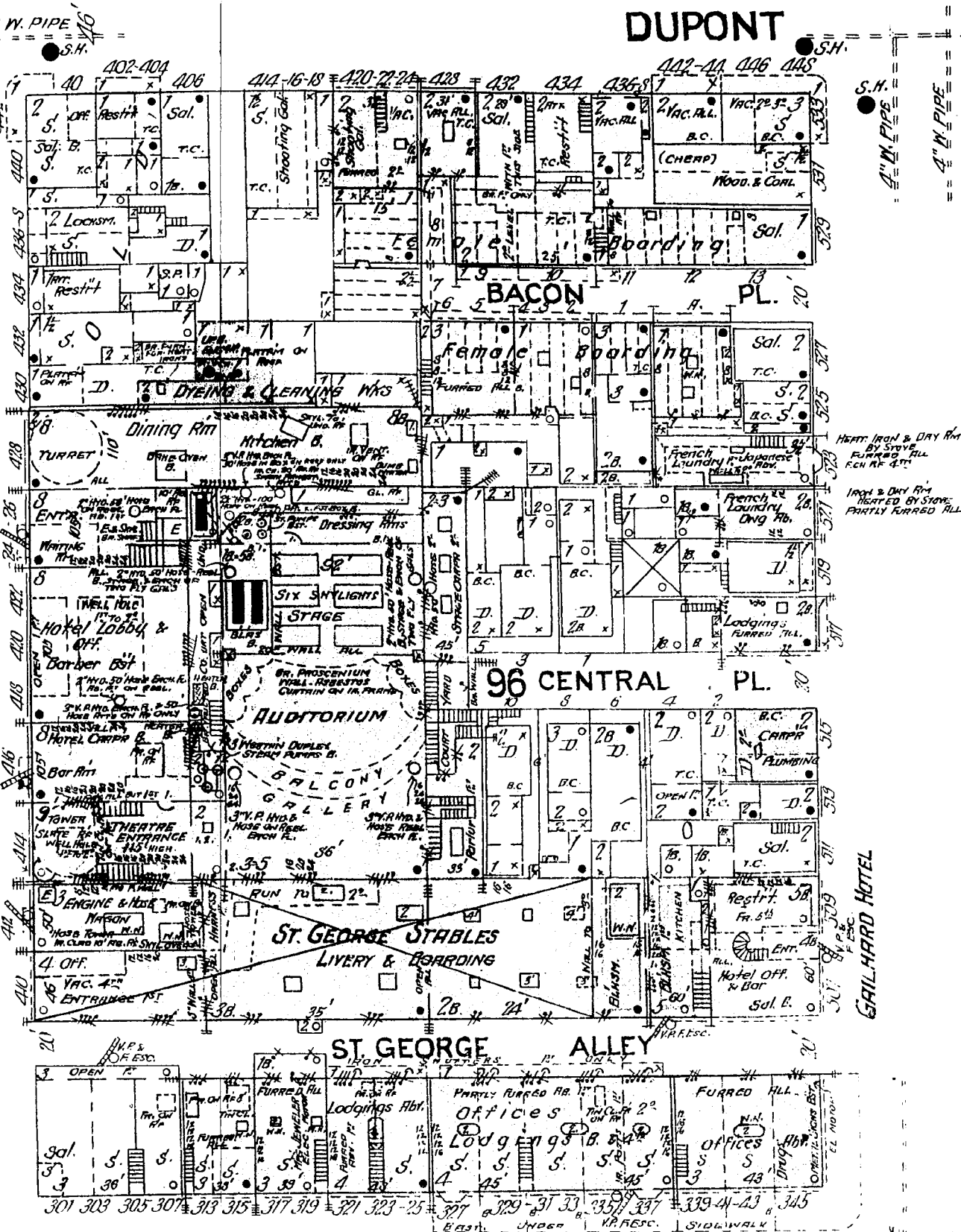


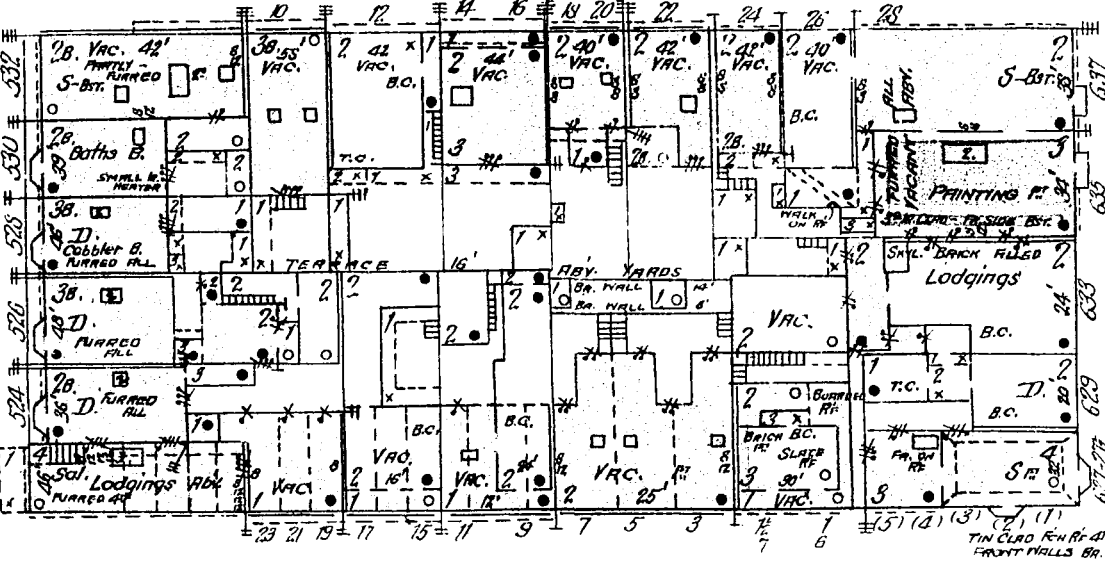
THE CALIFORNIA - HOTEL & THEATRE
 BUILDINGS RARED THRU OUT - BROWN SAND STONE FRONT 12 & 22 - PRESSED BRICK & TERRA COTTA
 ONE NIGHT WATCHMAN IN HOTEL - ONE MAN IN BOILER RM AT ALL TIMES - LIGHTS ELECTRIC & GAS
 HEAT SYSTEM & OPEN GRATES - WATER SUPPLY & PRESSURE FROM CITY MAINS
 NUMEROUS HYD & HOSE REELS AS SHOWN TWO 3" HOSE & 100 HOSE & TWO 1 1/2" HOSE ON RT OF HOTEL
 STEAM FROM BOILERS IN FIRE PROOF RM UNDER STAGE. SMOKE STACKS 30' HIGH NEAR STAGE RM. AT
 THREE FLOX. F.I. BOXES IN HOTEL, ONE IN COURT NEAR BOILER RM, ONE ON STAGE & ONE IN THEATRE BOX OFF.
 - THEATRE -
 LIGHTS ELECTRIC, GAS IN DRESSING ROOMS & FOR FOOTLIGHTS IN CASES OF EMERGENCY
 SIX HOSE REELS ON STAGE, SIX IN AUDITORIUM, ONE IN DRESSING RM UNDER STAGE & ONE IN CORRIDOR RM
 SIX LIGHTS OVER STAGE WILL OPEN AUTO. IN CASE OF FIRE TO CONFINE FLAMES BEHIND PROSCENIUM
 ROBUST CURTAIN & B.F. PROSCENIUM WALL DIVIDE STAGE FROM AUDITORIUM (CURTAIN IN R. FRAME)
 AUTO SPRINKLERS UNDER FLY GALLERIES OVER STAGE AND AUDITORIUM BY WHICH WATER WILL FLOOD
 WHEN TEMP. RISES ABOV 140° - IRON STAIRCASES TO GALLERIES - PAINTING ON BRIDGE OVER STAGE

38

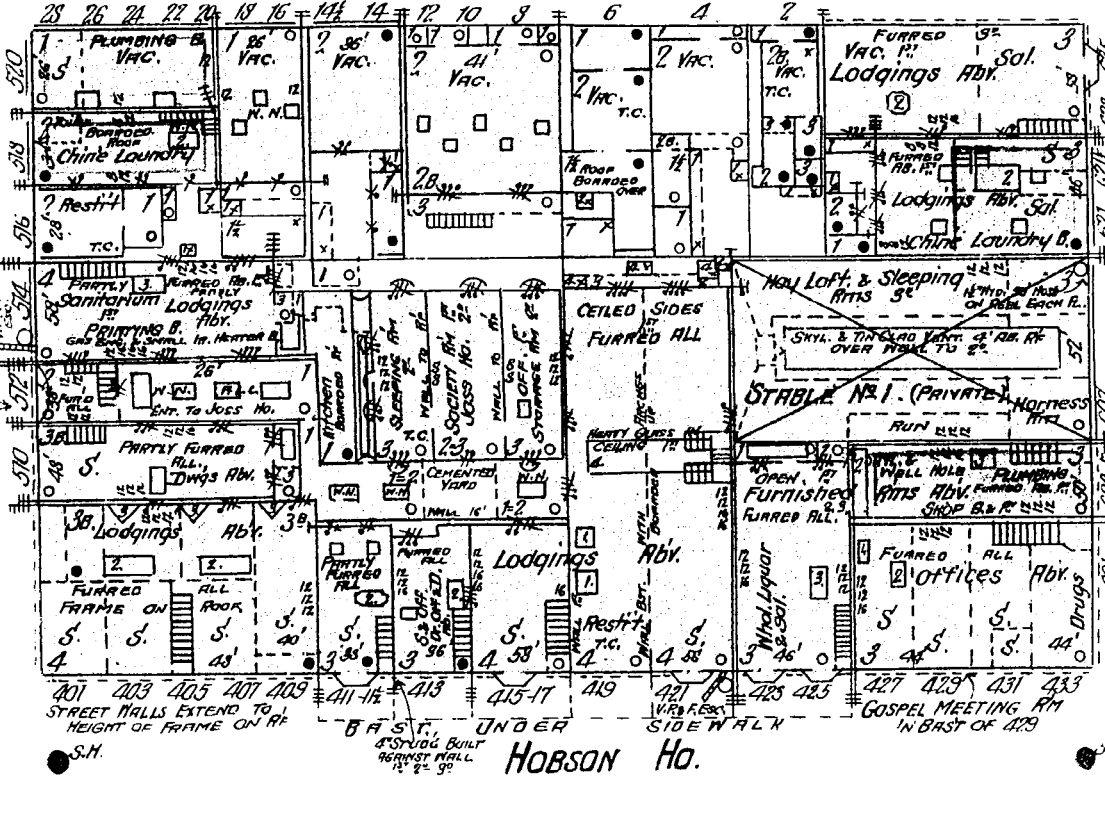
ST.



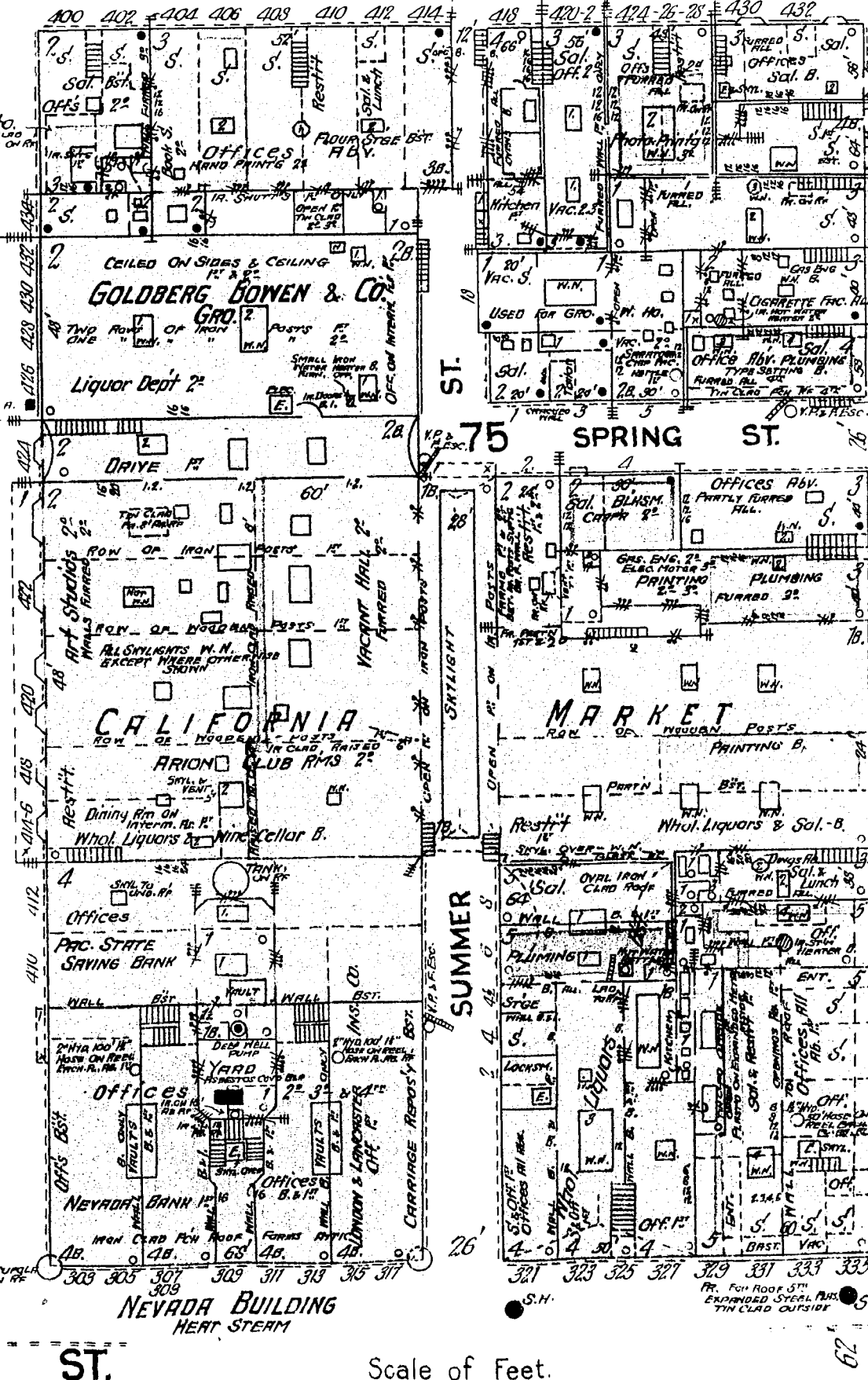
QUINCY ST. 95 25 1/2 feet wide



ST. MARY'S PL. 95 16 1/2 feet wide



KEARNEY 5 feet wide

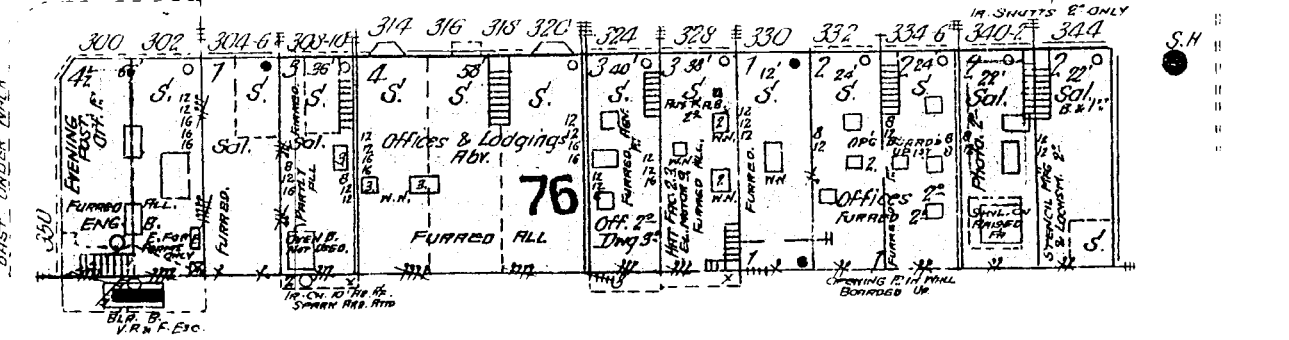


Scale of Feet. 0 20 40 60 80 100 120 140 160

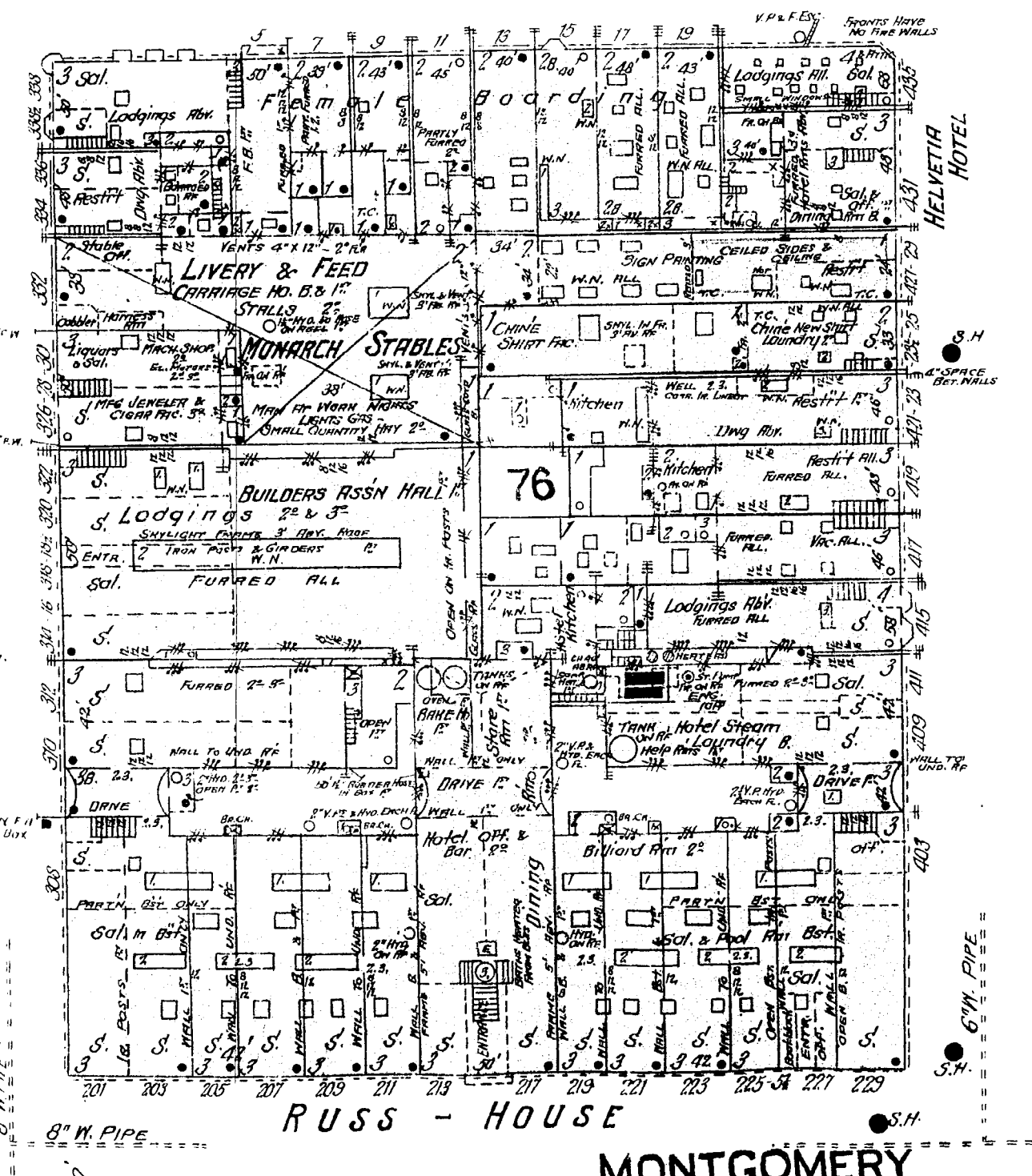
CALIFORNIA MARKET
 ABOUT 40 OCCUPANTS - NIGHT WATCHMAN
 LIGHTS GAS & ELECTRIC (TRUCK) NO HEAT
 100' HOSE - NO FIRE ARMS

26 25

THE EVENING POST
 EAST. PRESS RM & STENOGRAPHING 2" DEK'S
 3" EDITORIAL RMS. 4" COMPOSING
 5" ART DEPT. 6" PHOTO & 7" TYPE SETTING MACHS
 8" MAIL ROOM



BELDEN 22 feet wide



Russ-House
 NIGHT WATCHMAN - LIGHTS GAS & ELECTRIC (8' HOSE & 2" INCHES)
 HEAT OPEN GRATES - WATER SUPPLY & PRESSURE FROM CITY MAINS
 NUMEROUS V. PAPER & WOODEN FRAMES - THOSE COLORED 3' ABOVE ROOF
 ALL SKYLIGHTS IN N. HOODEN FRAMES - THOSE COLORED 3' ABOVE ROOF
 SIX RM. F.I. BOXES IN BUILDING.

16

27

CALIFORNIA

CLUB BLDG

CLUB BLDG