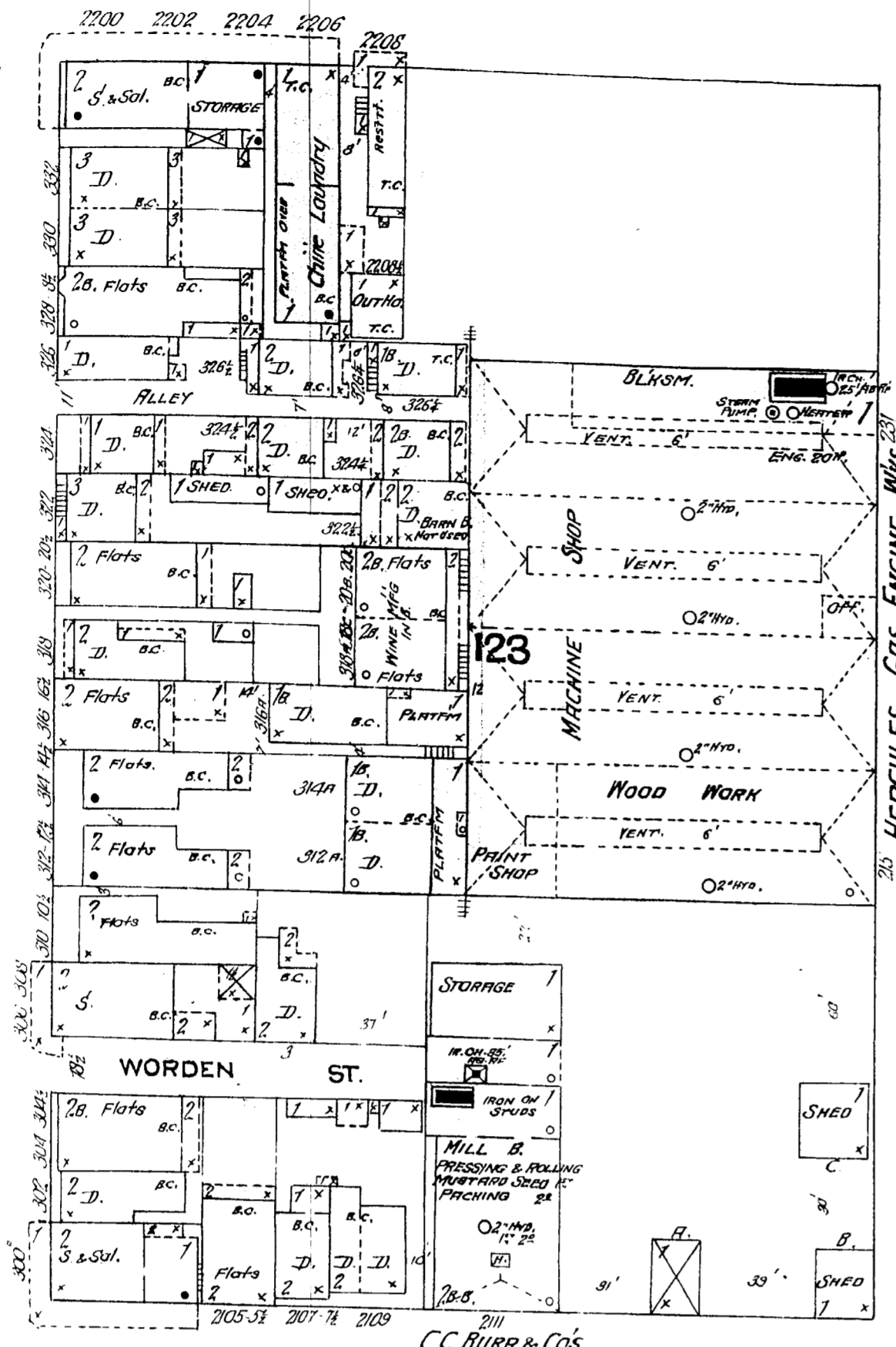


59

POWELL

ST.



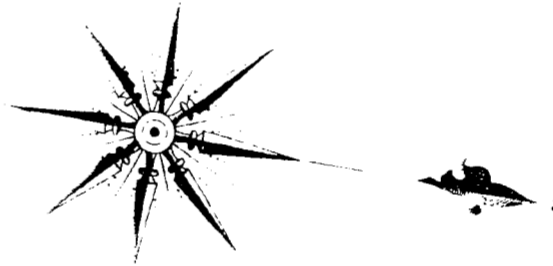
C.C. BURR & CO'S MUSTARD MILL

68'9" wide

795

68'9" wide

STOCKTON



90

ST.

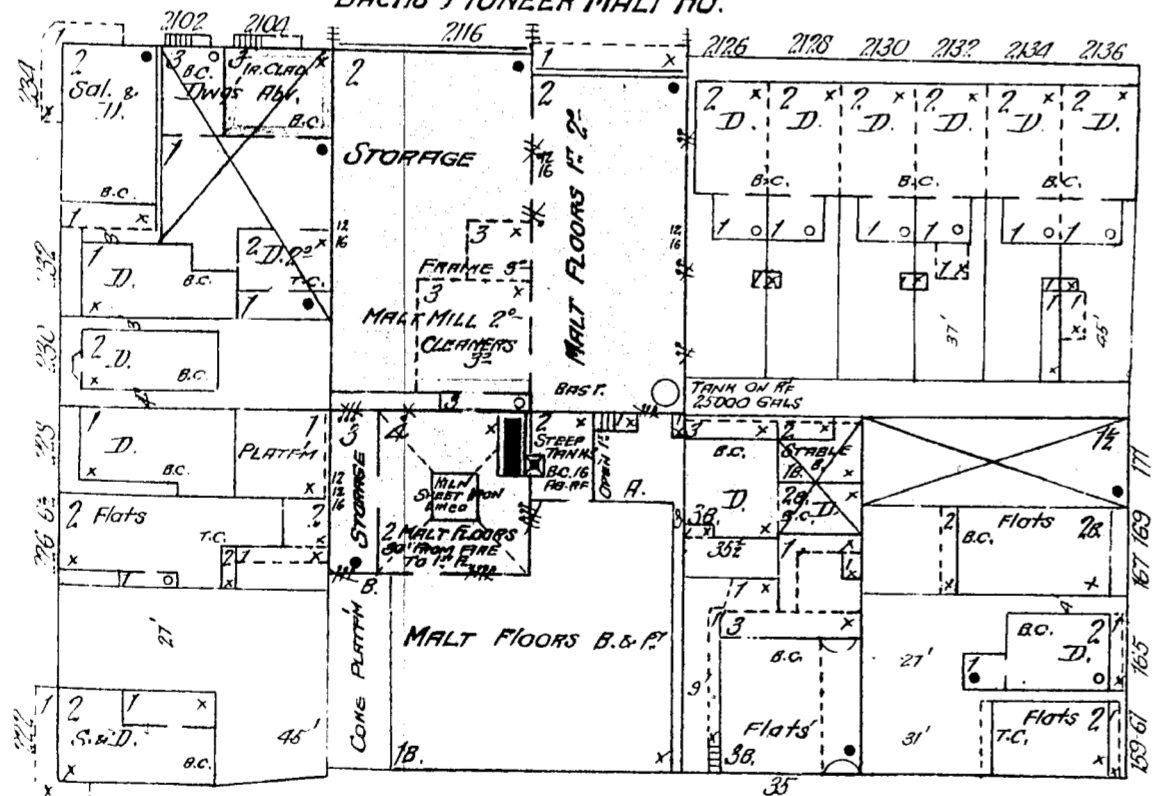
FRANCISCO

FRANCISCO

BAY

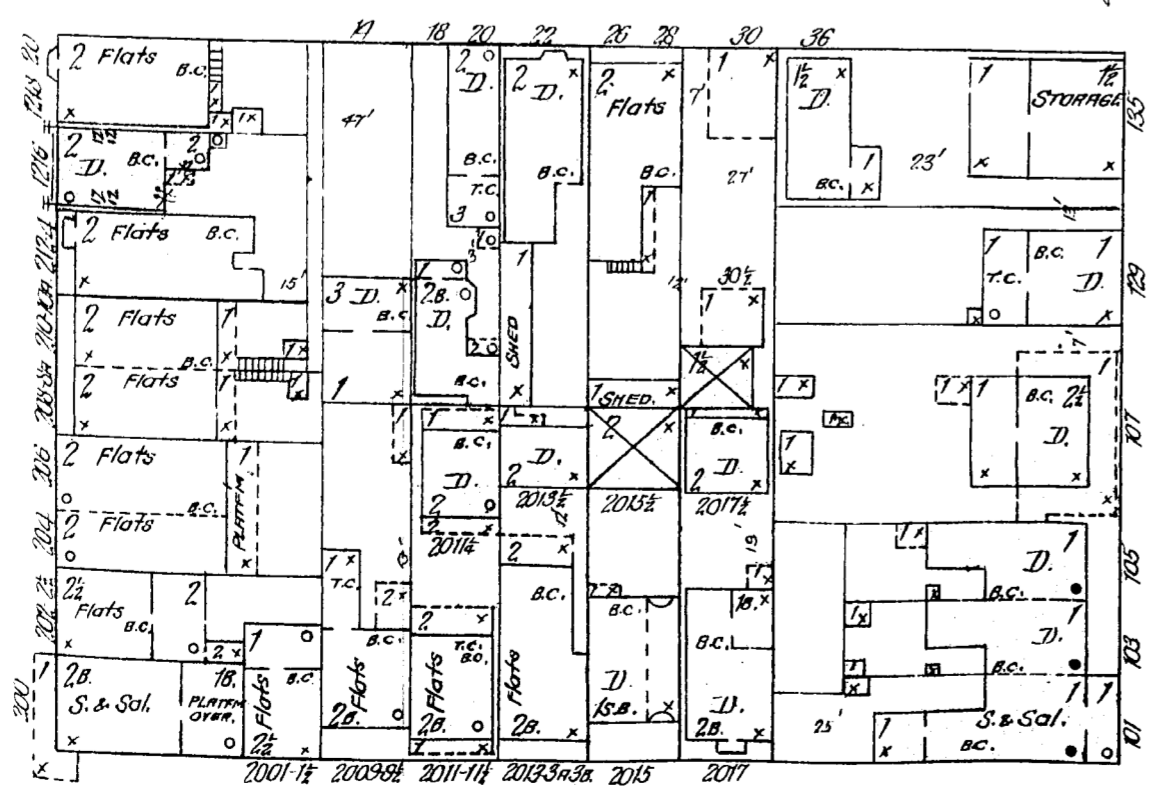
NORTH POINT

TWO MEN WORK BY NIGHT POWER STEAM  
 FUEL COAL & CONE - CITY WATER  
 LIGHTS KEROSENE LANTERNS - 2 BOX. F. A. BOXES  
**BACHS PIONEER MALT HO.**



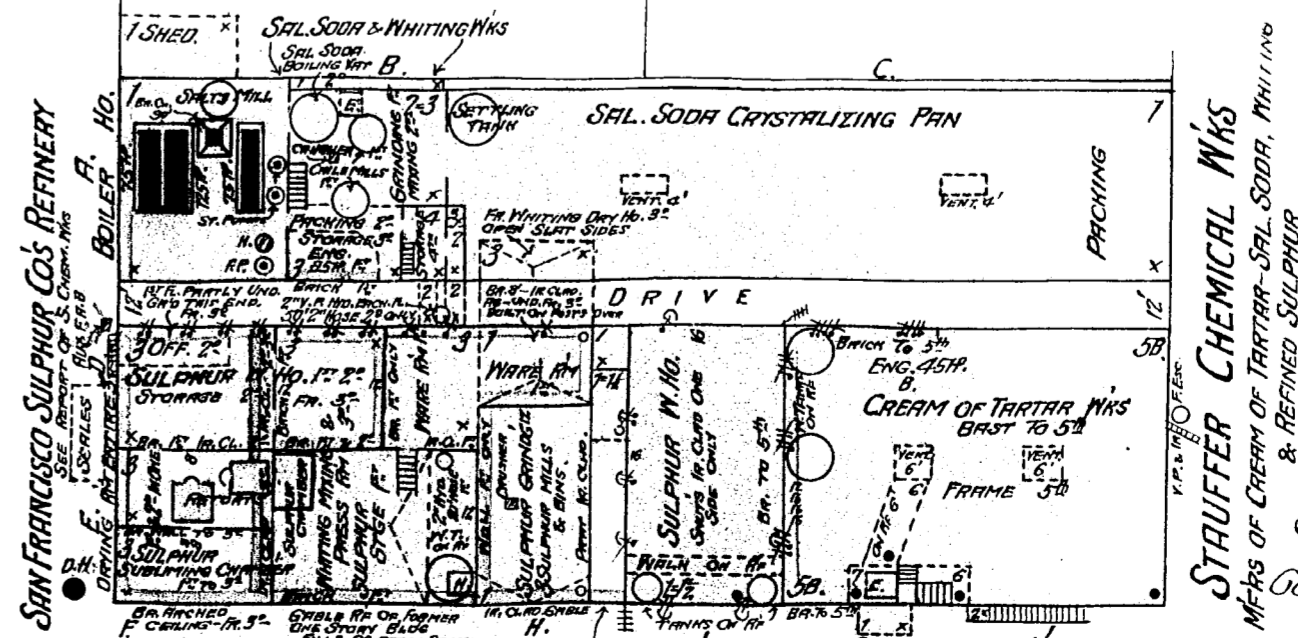
MIDWAY 101 ST

796



DUPONT

68'9"



SAN FRANCISCO SULPHUR CO'S REFINERY  
 NIGHT & SUNDAY WATCHMAN - WHO ALSO ATTENDS TO  
 REPORTS IN SULPHUR REFINERY & REPORTS HALL HOURLY TO DISTRICT AL. STY.  
 POWER STEAM - FUEL COAL - NO LIGHTS - CITY WATER - X. PIPES & HOSE AS SHOWN  
 THREE RUX F. A. BOXES.

STRAUFFER CHEMICAL M/S  
 M/S OF CREAM OF TARTAR - SAL. SODA, TRIM. ING  
 & REFINED SULPHUR

ST.

89

34

Scale of Feet.

