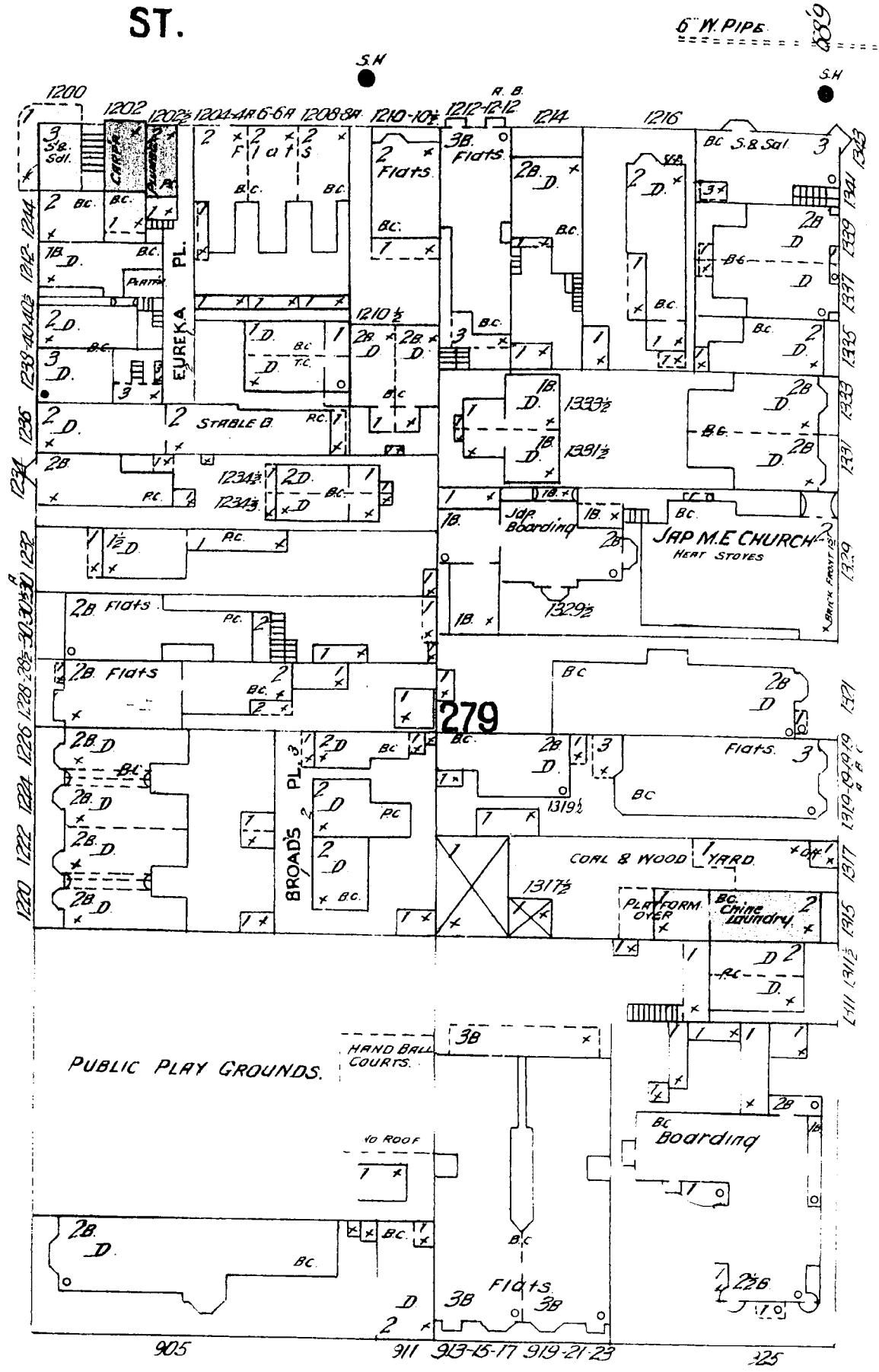
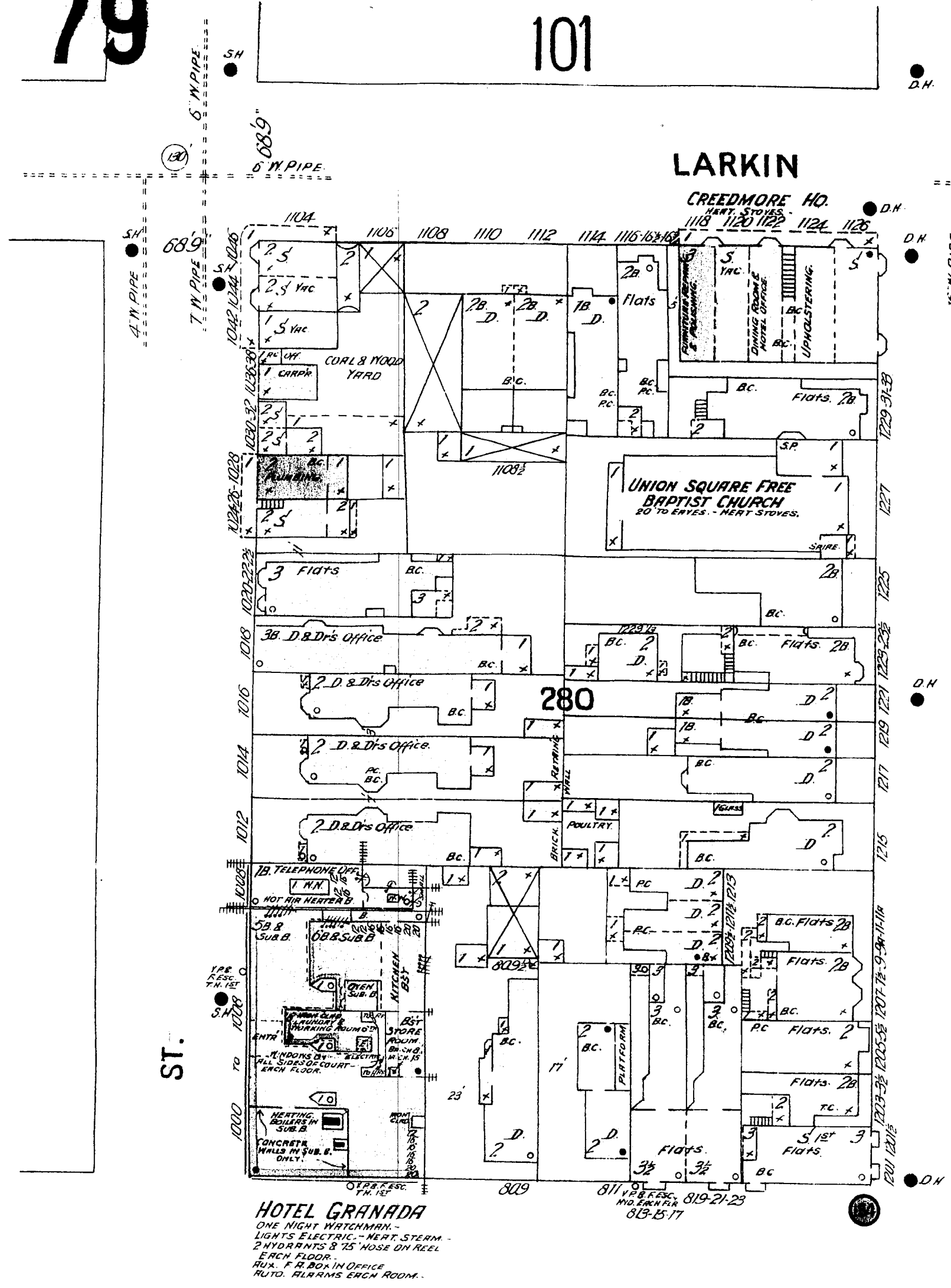


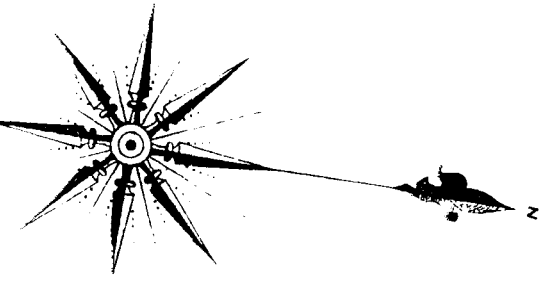
LARKIN

ST.

CREEDMORE HO.

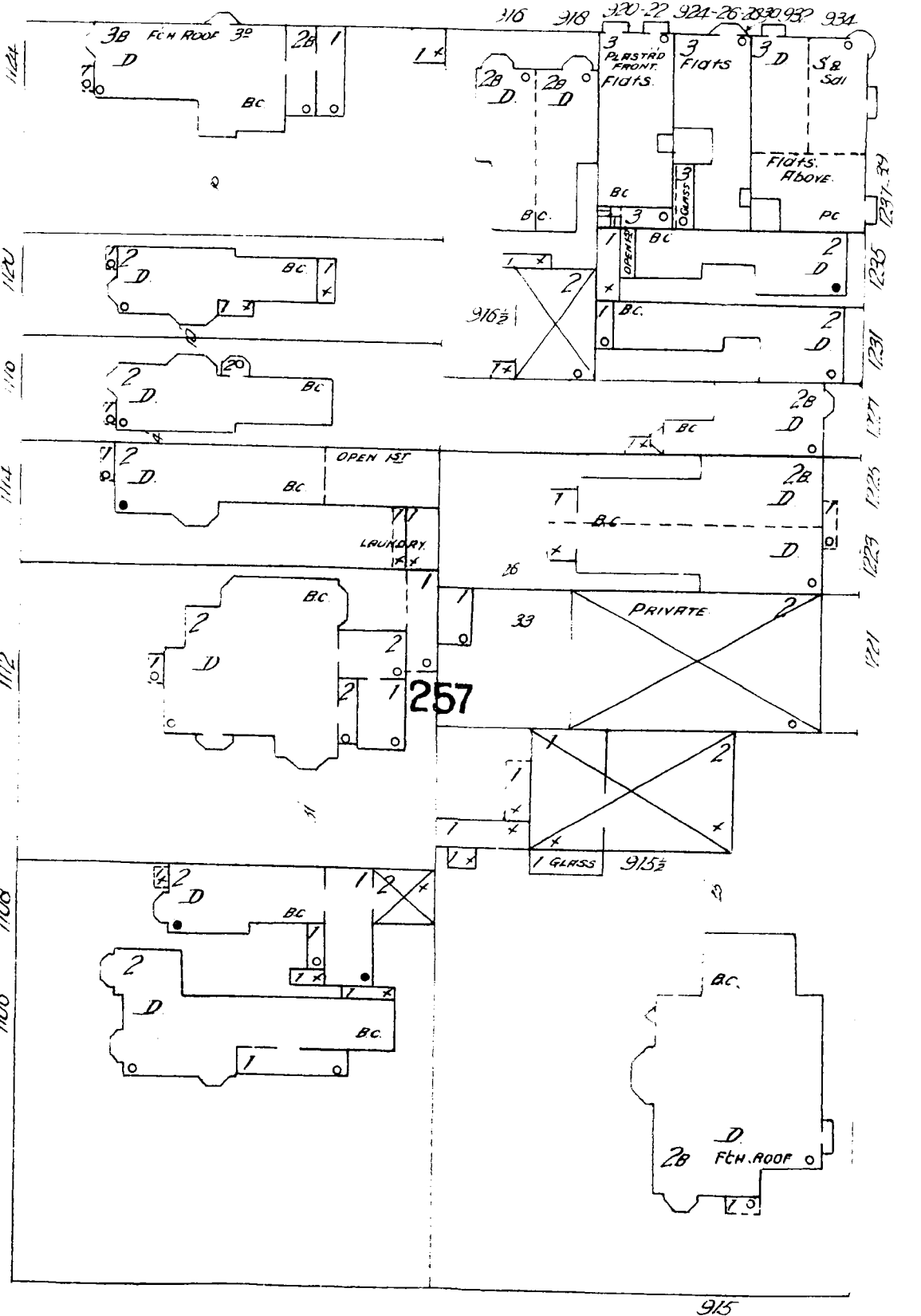
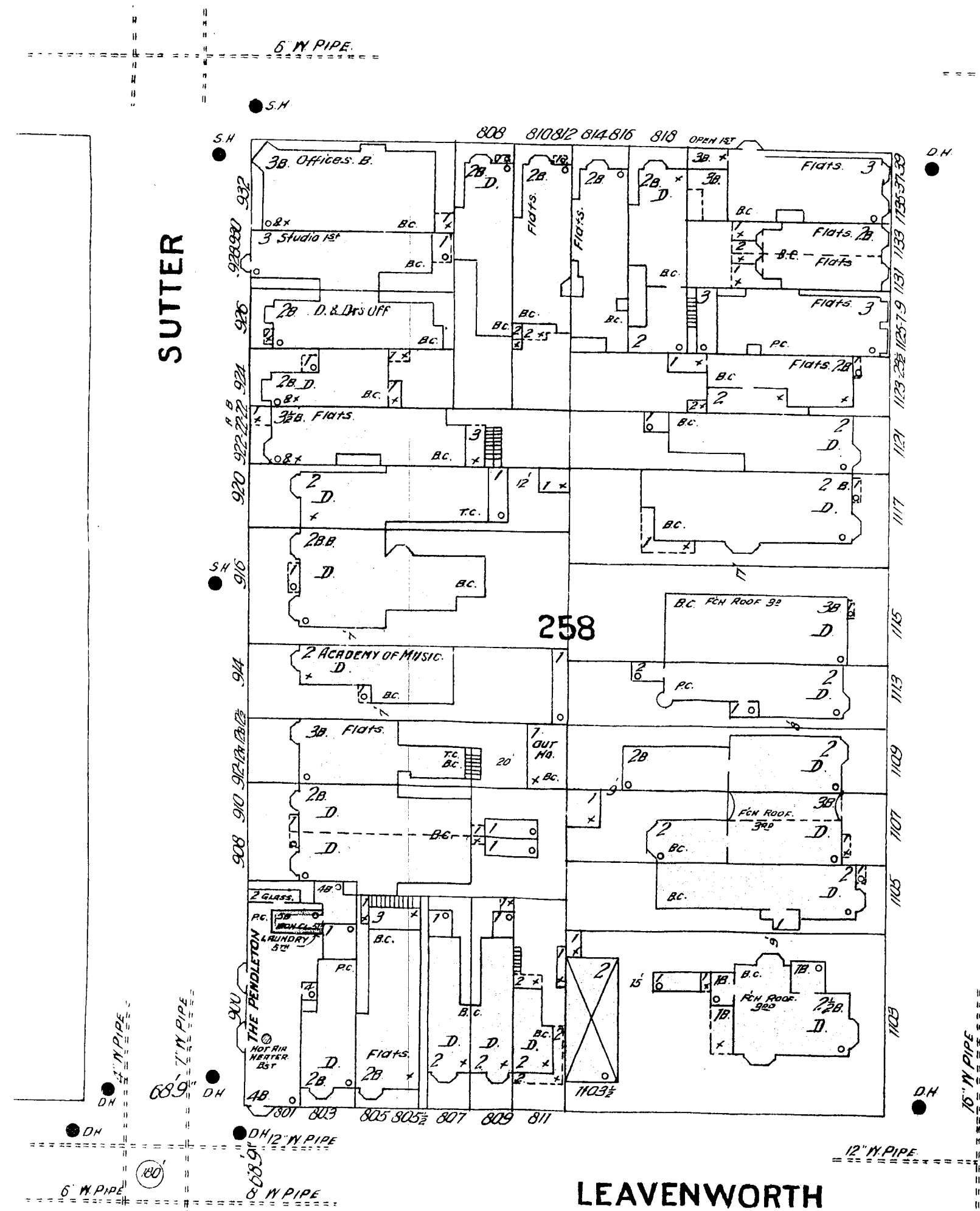


**HOTEL GRANADA**  
 ONE NIGHT WITNESSMAN -  
 LIGHTS ELECTRIC - HEAT - STEAM -  
 24 HOURS & 15' MOSS GARAGE  
 EACH FLOOR  
 HALL - P. S. BOOTH OFFICE  
 AUTO. RUMORS EACH ROOM.



HYDE

68'9" wide



LEAVENWORTH

ST.

Scale of Feet.

