

THIRD

CLARENCE PL. 412

STANFORD (35 feet wide)

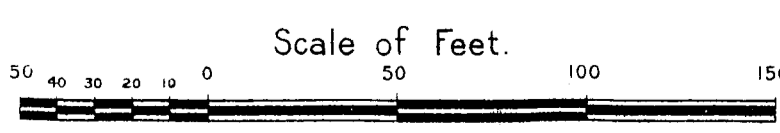
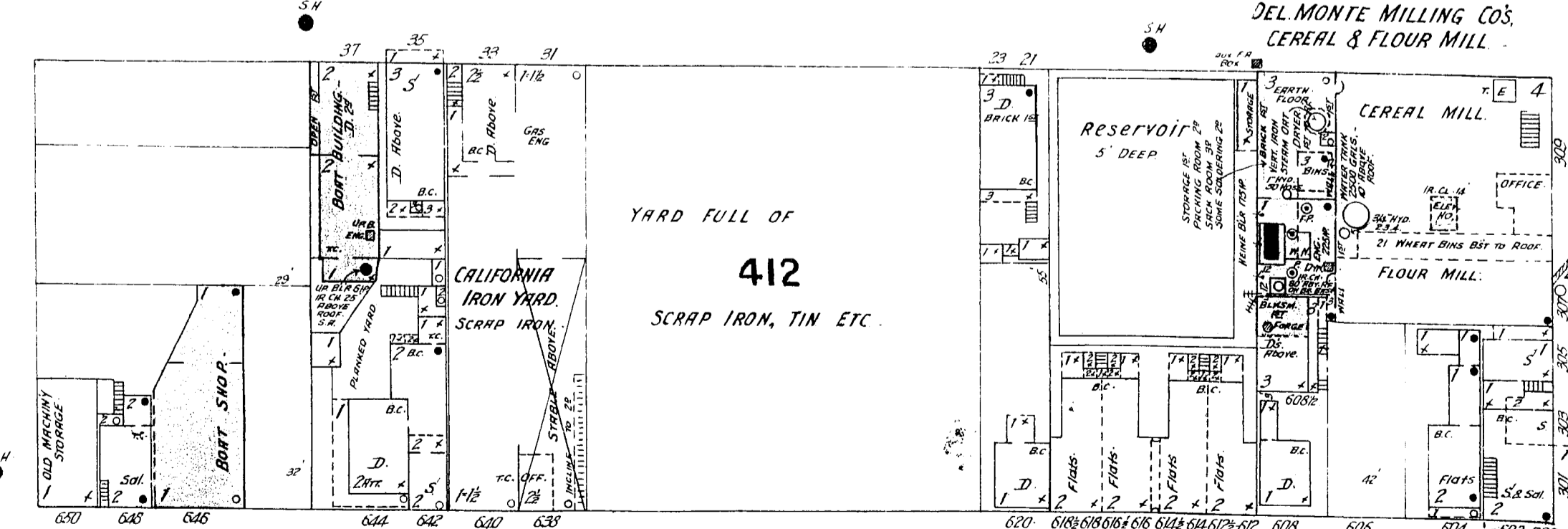
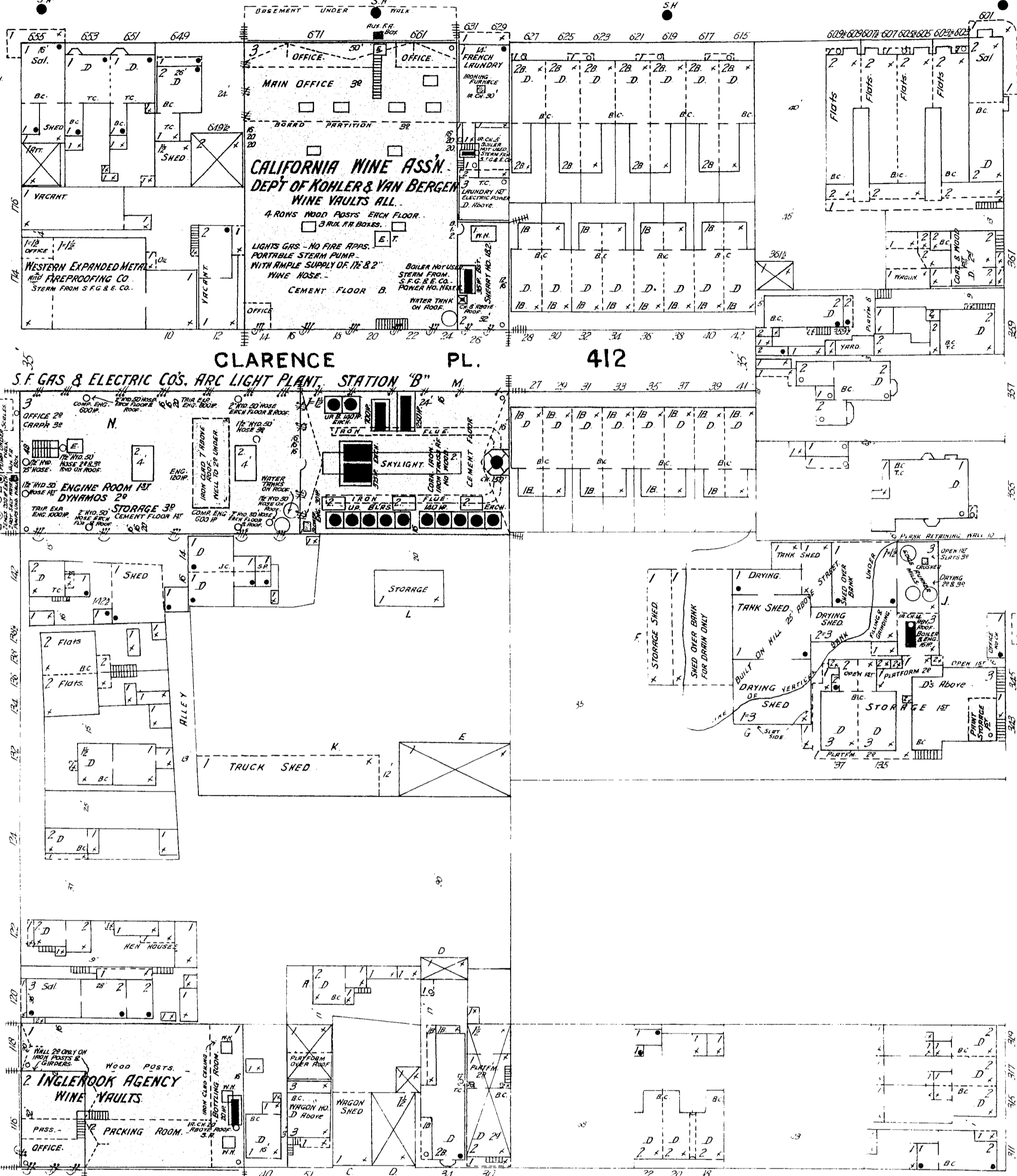
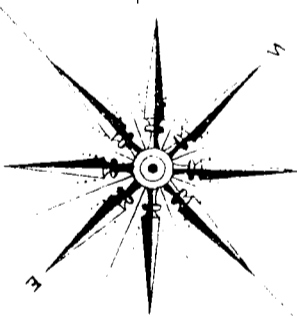
SECOND

TOWNSEND

BRANNAN

ENTER 2

NO WATERMAIN POWER STEAM...
LUMBER...
ALL LETTERS...
ONE DOZEN...
TWO DOZEN...
2 RAY FIRE



- DEL MONTE MILLING CO.**
- MACHINERY - CEREAL MILL
 - 1st - ONE BARLEY ROLL, ONE WHEAT GRANK.
 - ONE FEED MILL - 2 RUN STONE.
 - ONE CORN MEAL ROLL - 2 MILLING STONES.
 - 2nd - 3 PERAL BARLEY MILLS - ONE SHUTTER.
 - ONE OAT MILL PRCKER - ONE BARLEY PRCKER.
 - ONE OAT MILL CLIPPER.
 - 3rd - 3 OAT ROLLS, ONE SHUTTER, ONE CUTTER.
 - ONE REEL, 2 DUST COLLECTORS.
 - ONE HONNY MILL, ONE BRAN DUSTER.
 - 2 MEAL PRCKERS.
 - 4th - 9 BOLTING REELS - 2 SEPARATORS.
 - 13 DUST COLLECTORS - ONE PURIFIER.
 - ONE OAK SHAKER & ELEV. HEAD.
 - MACHINERY - FLOUR MILL
 - 1st - ONE FLOUR PRCKER.
 - ELEV FEET & FLOUR WARE HD.
 - 2nd - ONE FLOUR PRCKER, LINE SHAKTING.
 - 3rd - ONE FLOUR PRCKER, ONE WARE HD.
 - 4th - ONE FLOUR PRCKER.
 - 5th - ONE REEL, ONE BRAN PRCKER.
 - ONE SHORTS DUSTER.
 - 6th - 40 BOLTING REELS, 2 DUST COLLECTORS.
 - ONE SEPARATOR, 2 CENTRIFUGAL REEL.
 - ONE ROUND REEL & ELEV. HEADS.

NO WATERMAIN POWER STEAM - FULL COAL
25 MAN AT WORK DAY & NIGHT.
HYDRAULIC AND HOSE RE. SIGNAL SYSTEM
CONNECTED WITH SHUT WATER FIRE PUMP.
50 LBS. PRESSURE.
32 WATER PIPES, FIRE STEAM, SEVERAL RAIL FIBRES.
32 BRASS...
4...
5...
6...
7...
8...
9...
10...

PARIS WHITE WORKS
HEARFIELD BANNER & CO.
NO WATERMAIN POWER STEAM, FULL COAL.
NO LIGHTS, COT WATER, NO FIRE APPS.