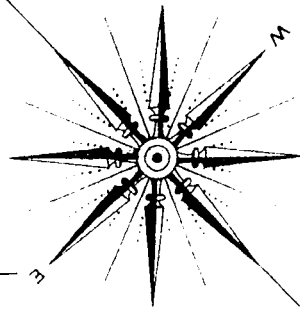
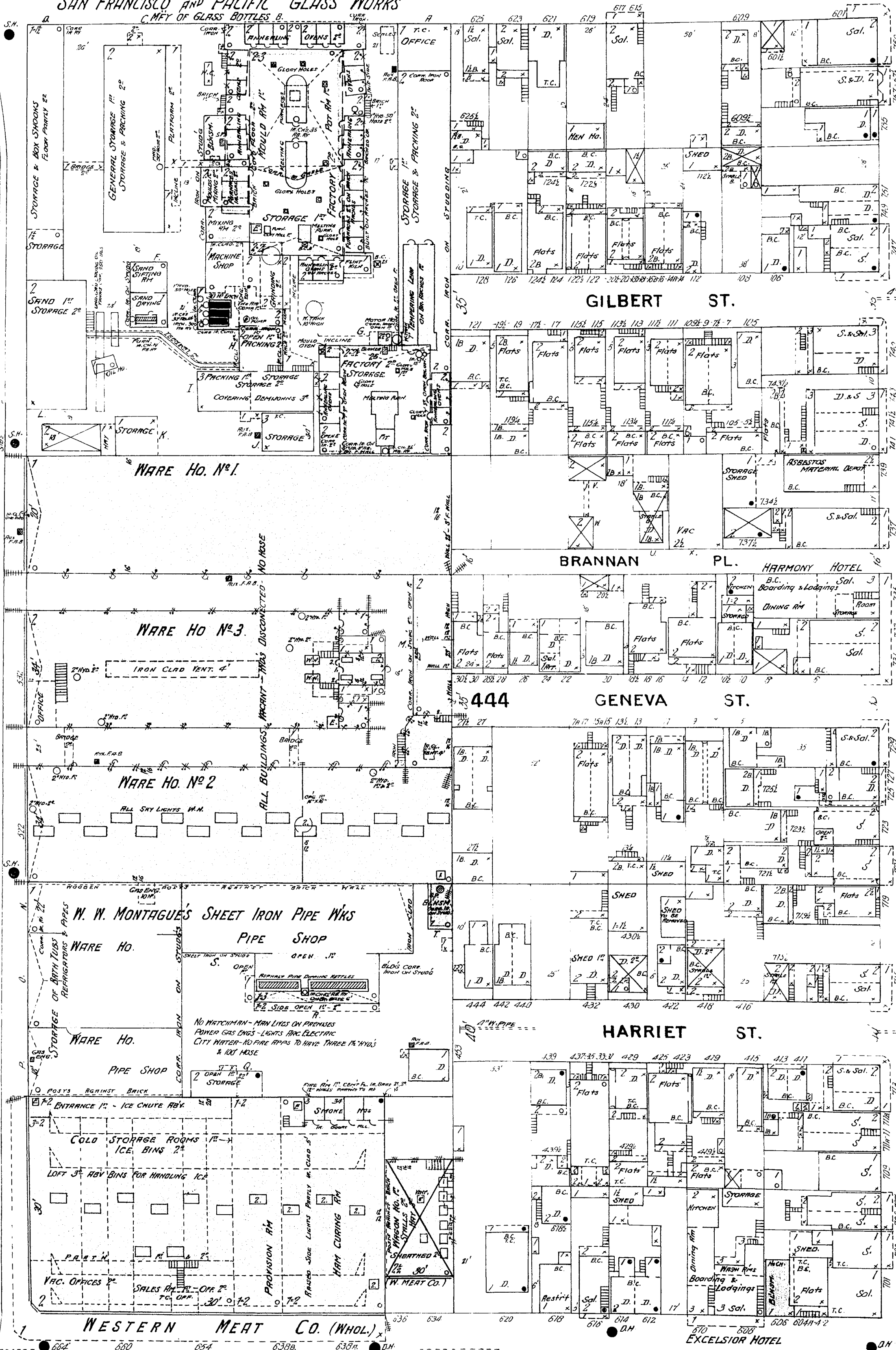


S. F. & PACIFIC GLASS WKS
 RUN DAY & NIGHT—CLOSED TWO MONTHS OF YEAR
 WITH HEAT MATCHHEM IN CHARGE
 PUMPS—STEAM—FUEL COAL IN BOILERS CRUDE OIL IN
 FURNACES BLOWN INTO SHAPES BY AIR
 GLORY HOLE FURNACES ALSO HEATED BY CRUDE OIL
 LIGHTS KEROSENE LAMPS & GAS
 SIX F.R. BUSES—TRAYS 100 POUNDS AS SHOWN
 WATER BLS ON FRAME ROOFED GLASS
 OVENS & FURNACES BUILT ON BRICKS 14" STORAGE BETW.
 BUILDINGS SUBSTANTIAL



SEVENTH

SAN FRANCISCO AND PACIFIC GLASS WORKS
 C. MFG. OF GLASS BOTTLES & C.



TOWNSEND

S. P. R. R. (COAST DIV.)

BRANNAN

BOARDMAN

SIXTH

BLUXOME ST.

Scale of Feet.

