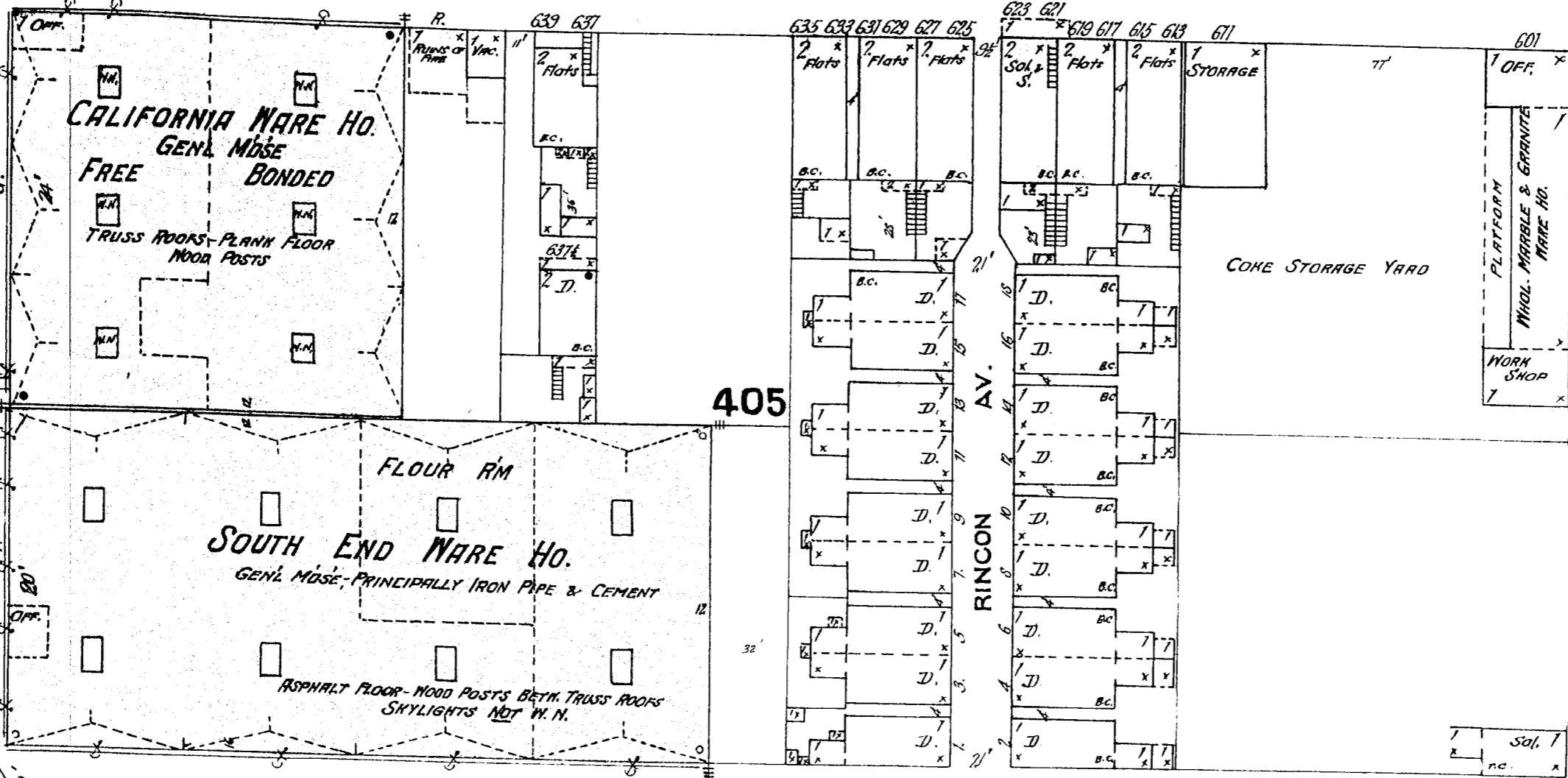


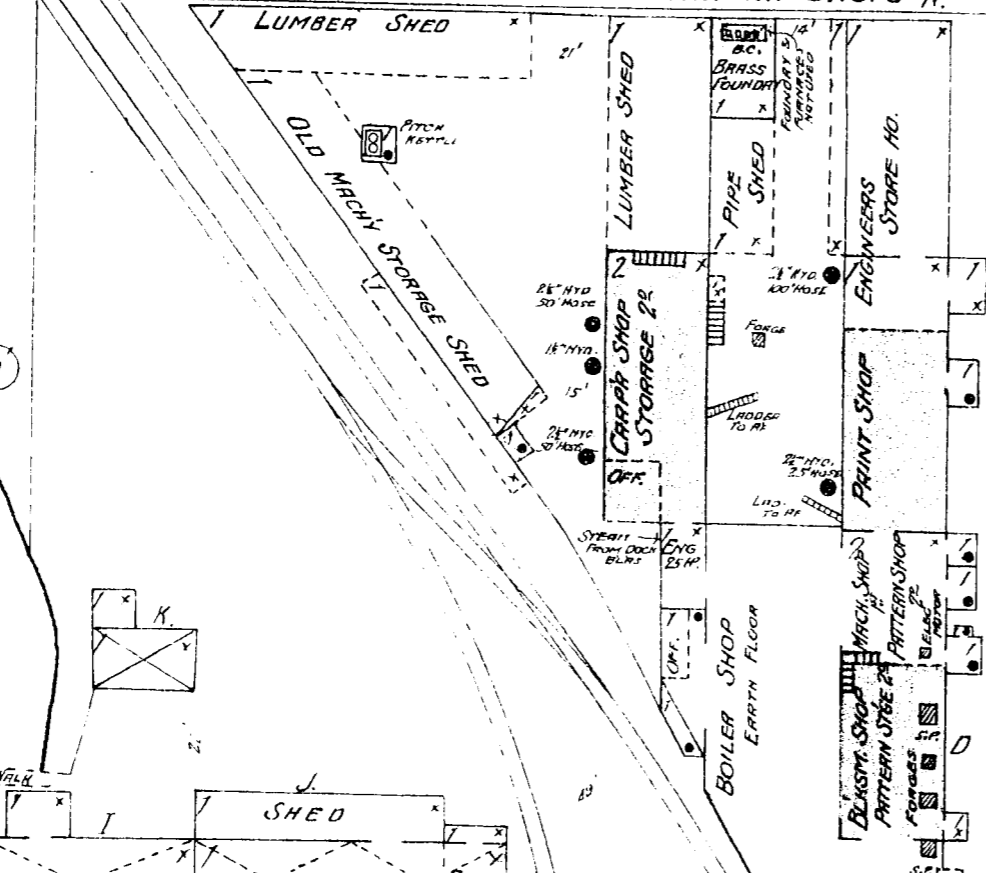
TOWNSEND



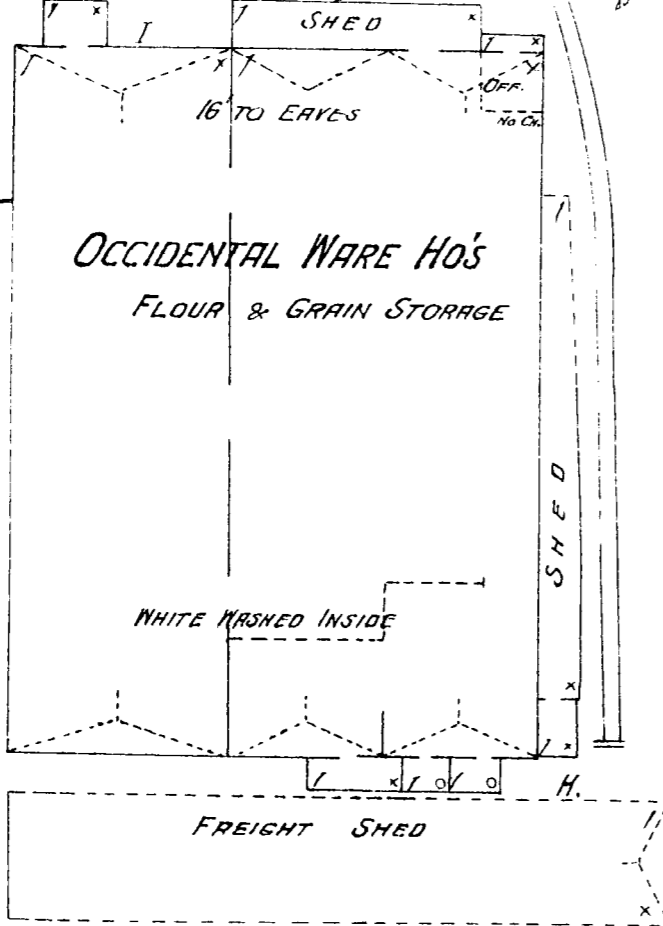
405

JAPAN

PACIFIC MAIL STEAMSHIP CO'S REPAIR SHOPS N.

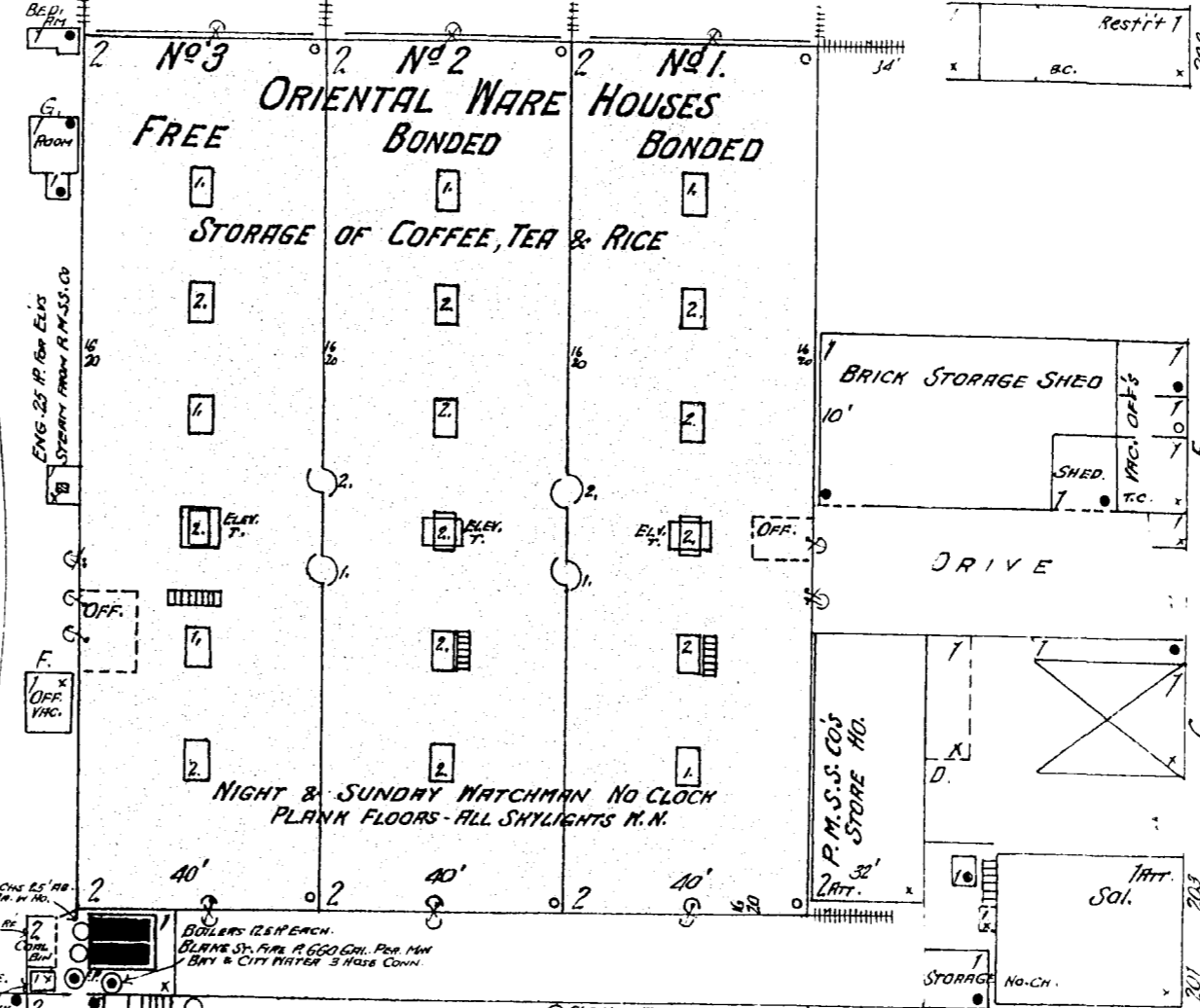


OCCIDENTAL WARE HO'S
FLOUR & GRAIN STORAGE

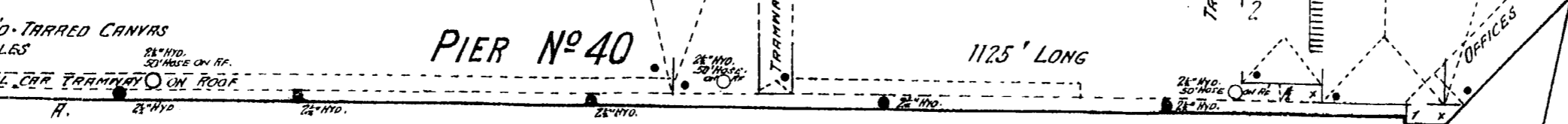


405

ORIENTAL WARE HOUSES
FREE BONDED BONDED
STORAGE OF COFFEE, TEA & RICE



PACIFIC MAIL STEAMSHIP CO'S DOCK AND FREIGHT HO.

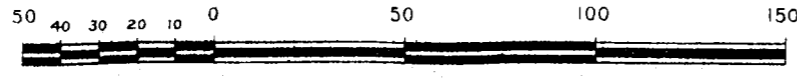


PIER No 40

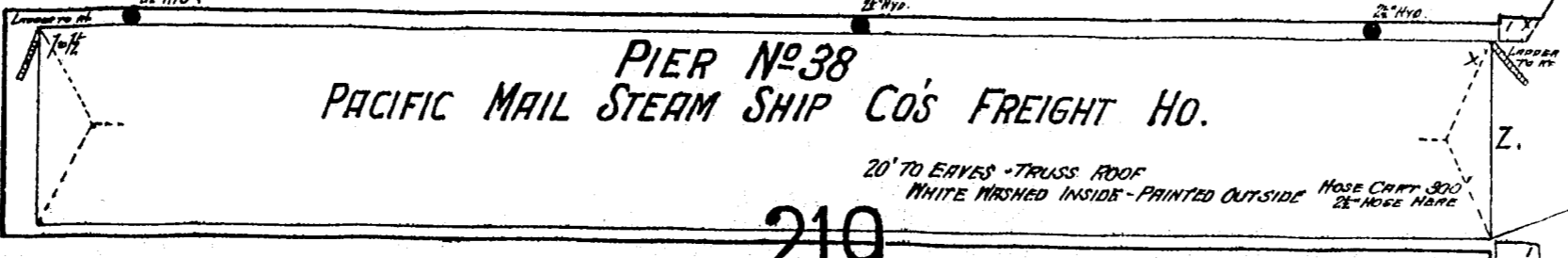
P. M. S. S. CO.

THREE NIGHT & ONE SUNDAY WATCHMAN INCLUDING ONE AT SHOPS
NO CLOCKS - LIGHTS ELECTRIC - HEAT STEAM IN OFFICE
HYDRANTS WITH HOSE ATTACHED AS SHOWN - TWO HAND HOSE CHARTS WITH
300' HOSE EACH & TWO REELS WITH 200' HOSE EACH IN FREIGHT HO.
STEAM UP, DAY & NIGHT - STEAM PUMP IN BOILER NO. COIN WITH ALL RIGGS
COMPANY'S TUG WITH LARGE PUMP CAPABLE OF THROWING 5" STREAMS
& CARRYING 200' HOSE IS SUPPOSED TO BE MOORED AT DOCK
WHEN NOT ACTIVELY ENGAGED -
THREE AUX. F. R. BOXES - BUILDINGS SUBSTANTIAL

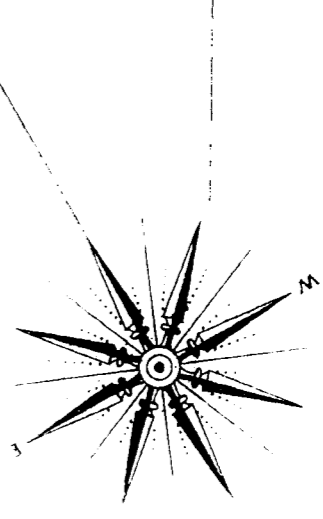
Scale of Feet.



PIER No 38
PACIFIC MAIL STEAMSHIP CO'S FREIGHT HO.



219



BRANNAN

177

219

FREMONT ST.

Francisco
San
Bay of