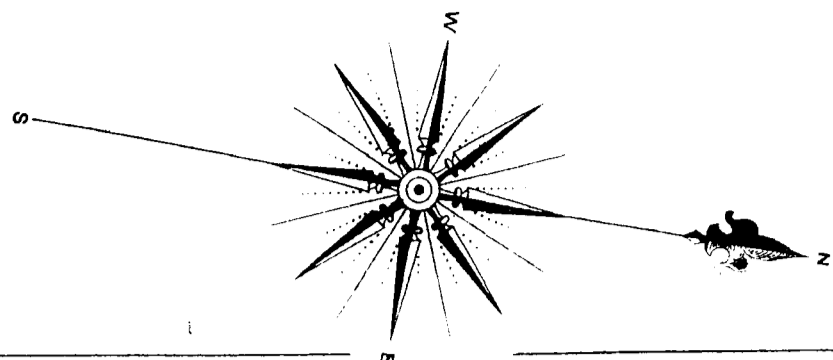


S. F. G. & E. CO'S NORTH BEACH STATION

MAKING GAS FROM COAL & CRUDE PETROLEUM
WORKING NIGHTS ABOUT 4 MOS OF YEAR NIGHT WATCHMAN REST OF TIME
POWER STEAM - FULL COAL - LIGHTS GAS & ELECTRIC CITY & MELL WATER
EIGHT REGULAR CITY FIRE HYDRANTS ON & NEAR PREMISES AS SHOWN
CONVD WITH ELEVATED TANKS & CITY MAIN
HOSE CART WITH 500' 2" RUBBER HOSE ON PREMISES
PREMISES EXCEPTIONALLY CLEAN & TIDY - BLDGS VERY SUBSTANTIAL
SLATE ROOFS ON BRICK - WOODEN TRUSS ROOFS ON BRICK BLDGS
EXCEPT WHERE OTHERWISE NOTED - FLOORS ARE IRON, BRICK OR CEMENT

323

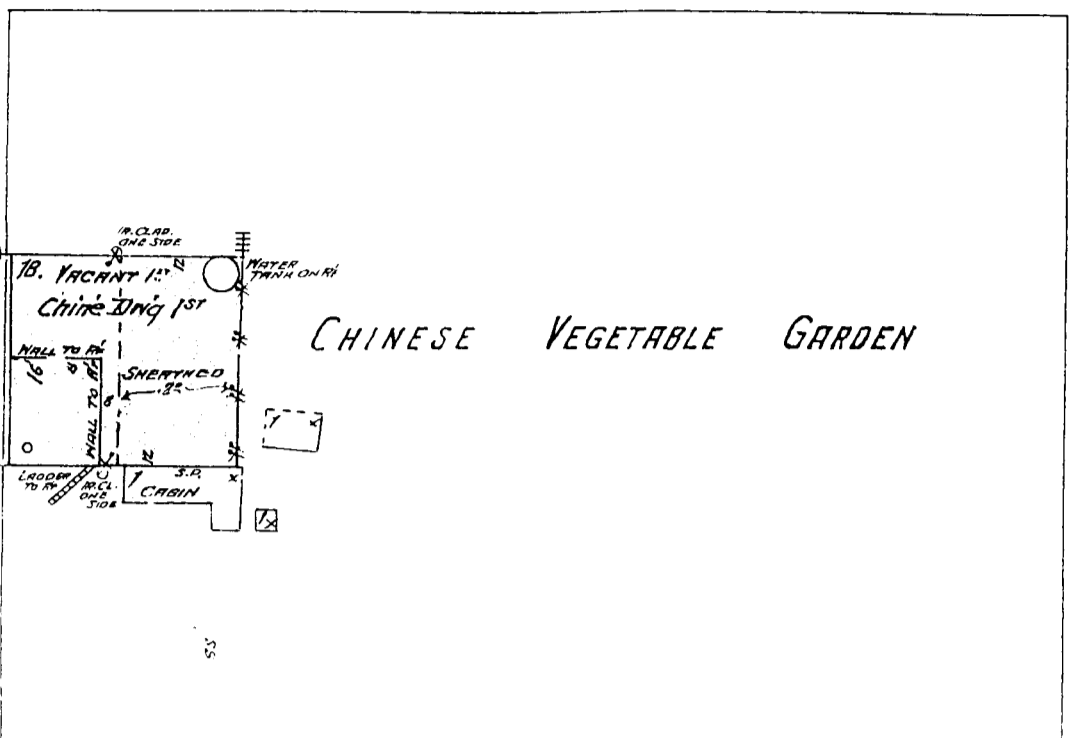


WEBSTER

68'9"

68'9"

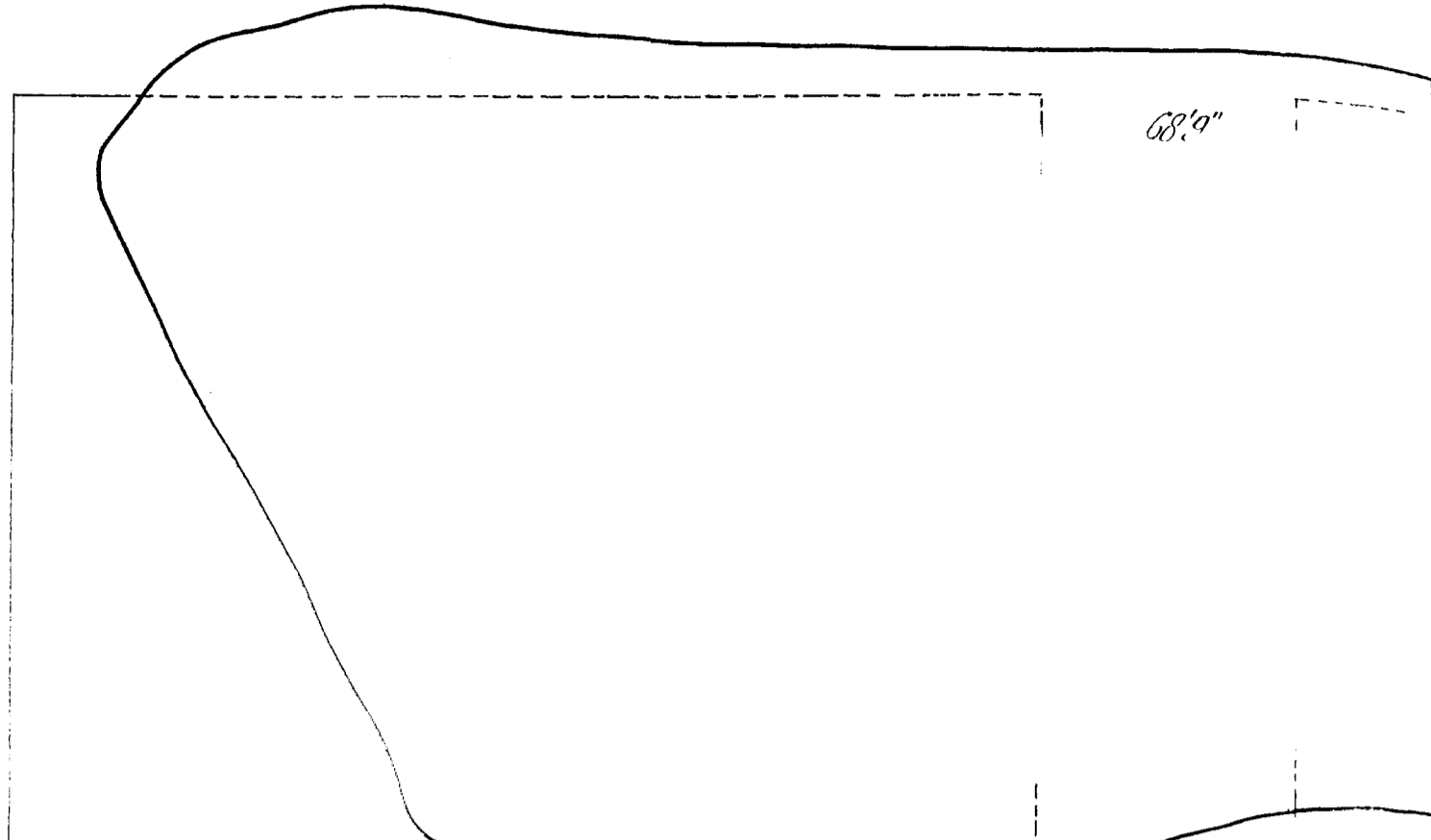
68'9"



1557 FENCE

68'9"

68'9"

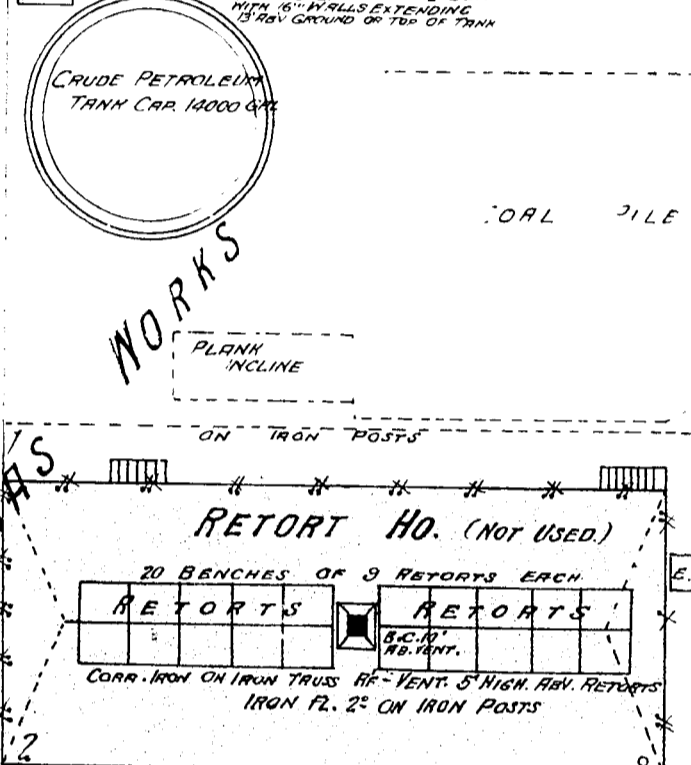
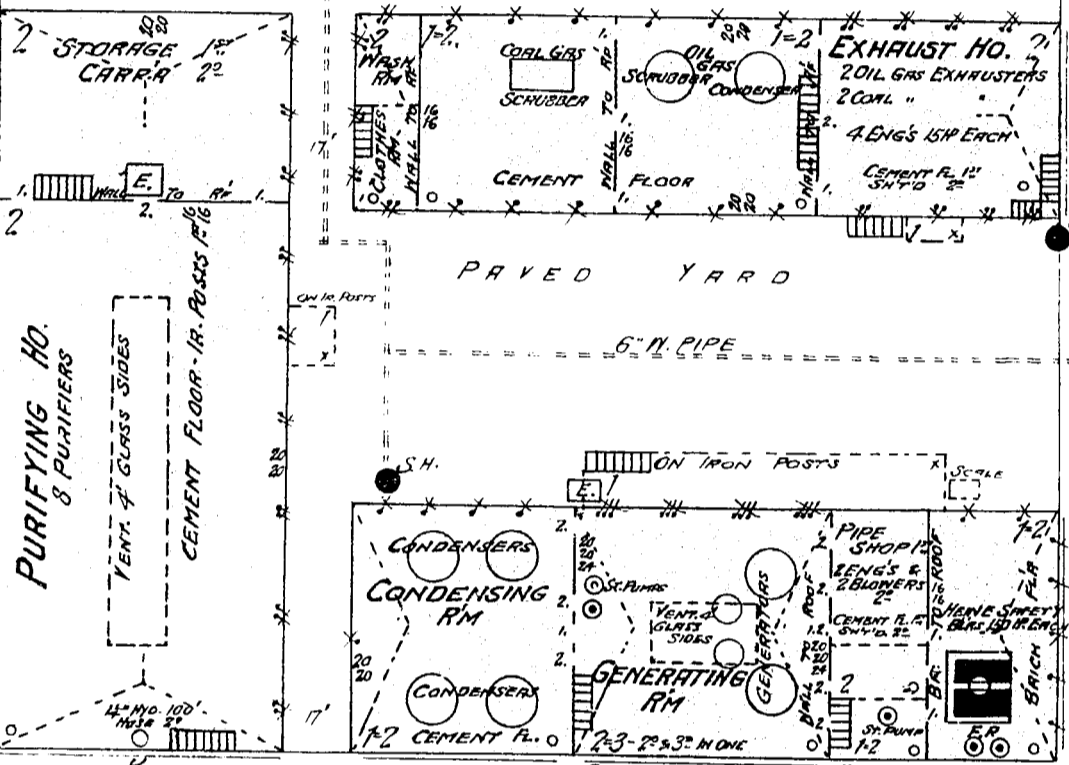


1558

6189 ft wide

SQUARE

LOBOS



BUCHANAN

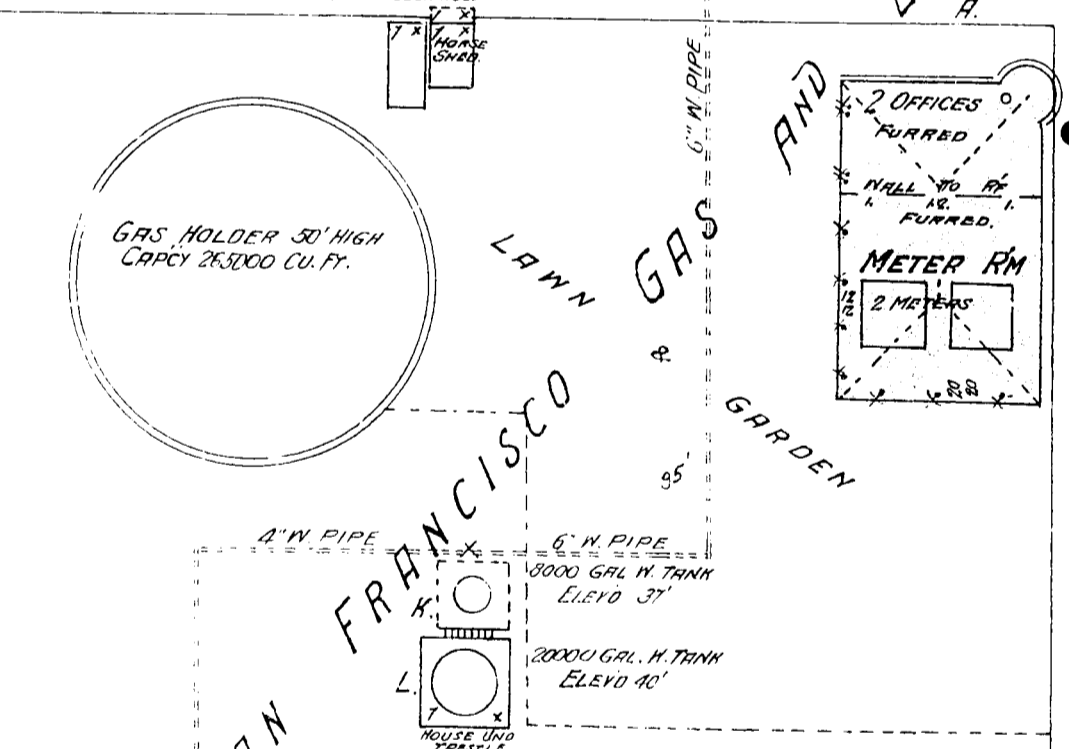
302

301

BAY

NORTH POINT

BEACH



1563

1562

282

68'9"

68'9"

68'9"

68'9"

LAGUNA

68'9"

U. S. GOV'T RESERVATION - FORT MASON -

