

619

618

CHANNEL

STEUBEN

BOUTWELL

AUGUSTA

SAN BRUNO

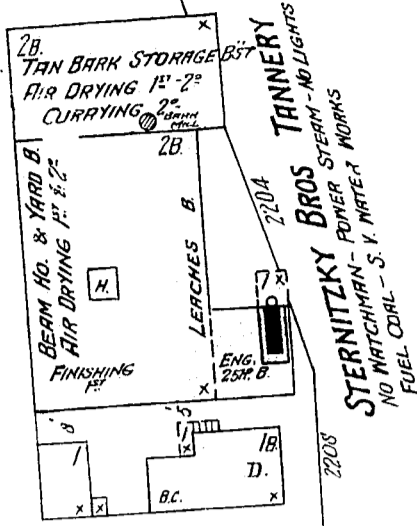
CHARLES AV.

7TH AV. S.

ST. NOT OPENED & IMPASSABLE

MARSH LAND ADJOINING PRECITA CREEK

200' TO BIRCHES & OS
HAWK PINE



2813

2814

2815

2816

RICKARD

2817

AV.

GAVEN

2818

AV.

SWEENEY

617

BARNEVELD

2822

HALE

2823

SILVER

2819

2820

2824

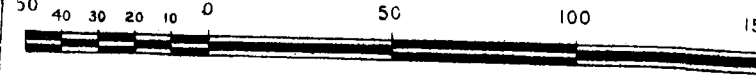
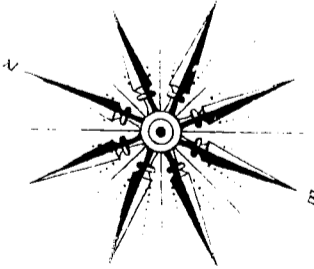
AV.

2805

618

Scale of feet.

2805



GIARRO ST.