

Fresco No. 7.  
**741** 737

1. ST.

HUGO ST.  
**738**

H ST.

NOT OPENED  
1ST AV.

**735**

PARNASSUS AV.

3406

3403

CARL

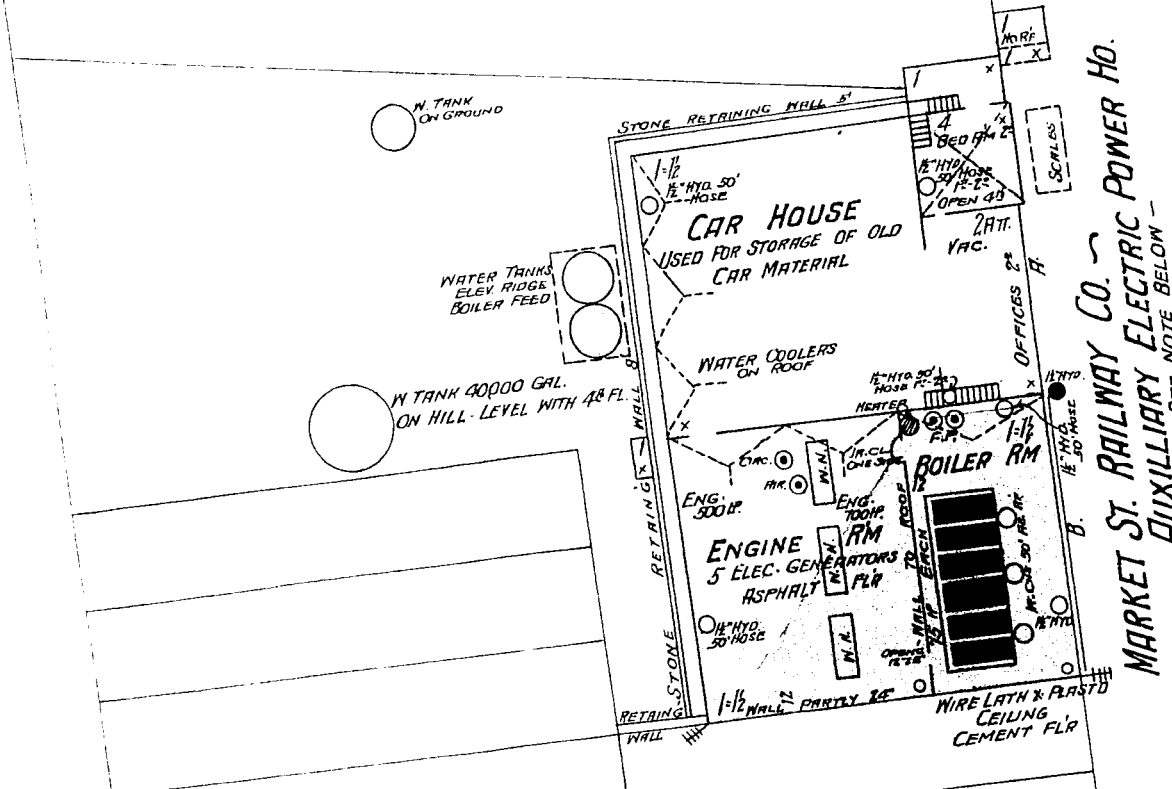
FREDERICK

3402

MAHALLI JI RAILWAY LU

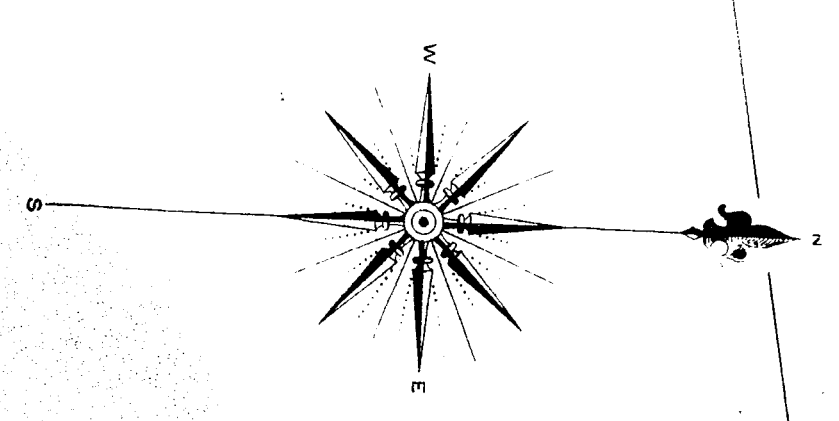
GOLDEN GATE PARK

**736**

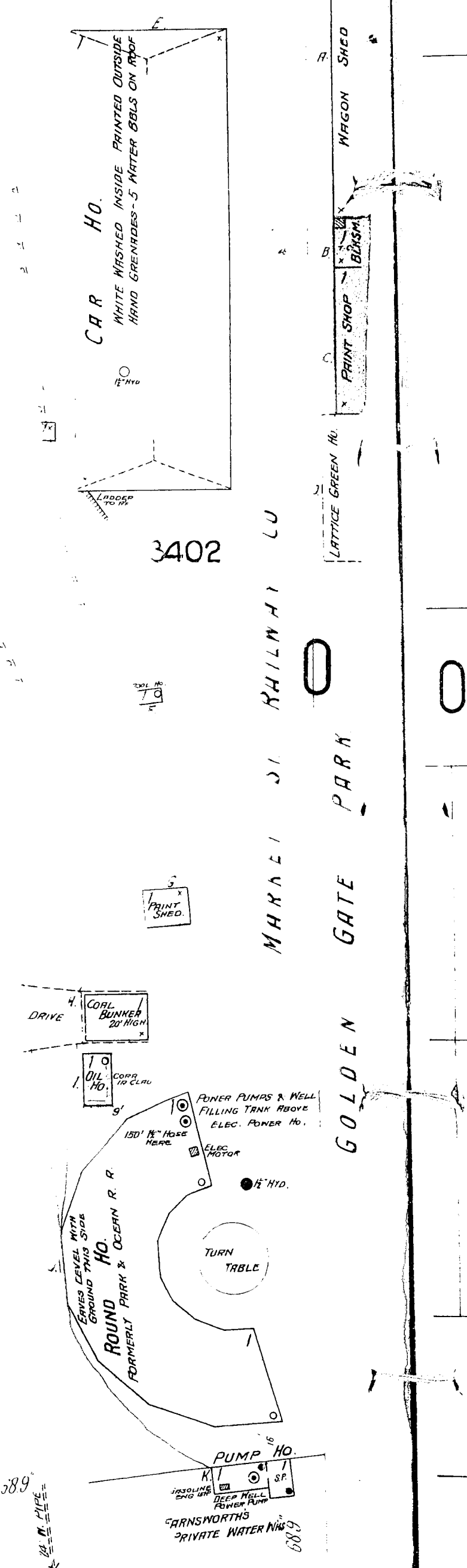
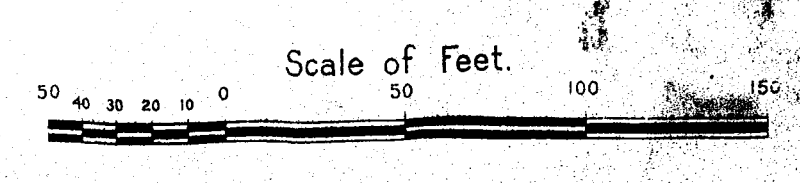


WILLARD

**735**



RUN ONLY ON SUNDAYS DURING SUMMER MONTHS  
OR IN CASE OF ACCIDENT TO MAIN POWER HO.  
DRY WATCHMAN IN CHARGE OF PREMISES, SLEEPS IN BLDG AT NIGHT.  
POWER STEAM - FUEL COAL - LIGHTS ELECTRIC. 4 DOZ. CHENL. FIRE PAILS  
HYDRANTS & HOSE AS SHOWN CONNECTED WITH CITY WATER OR  
WATER TANK ON HILL. FILLED FROM WELL.



H-11(1)1900